

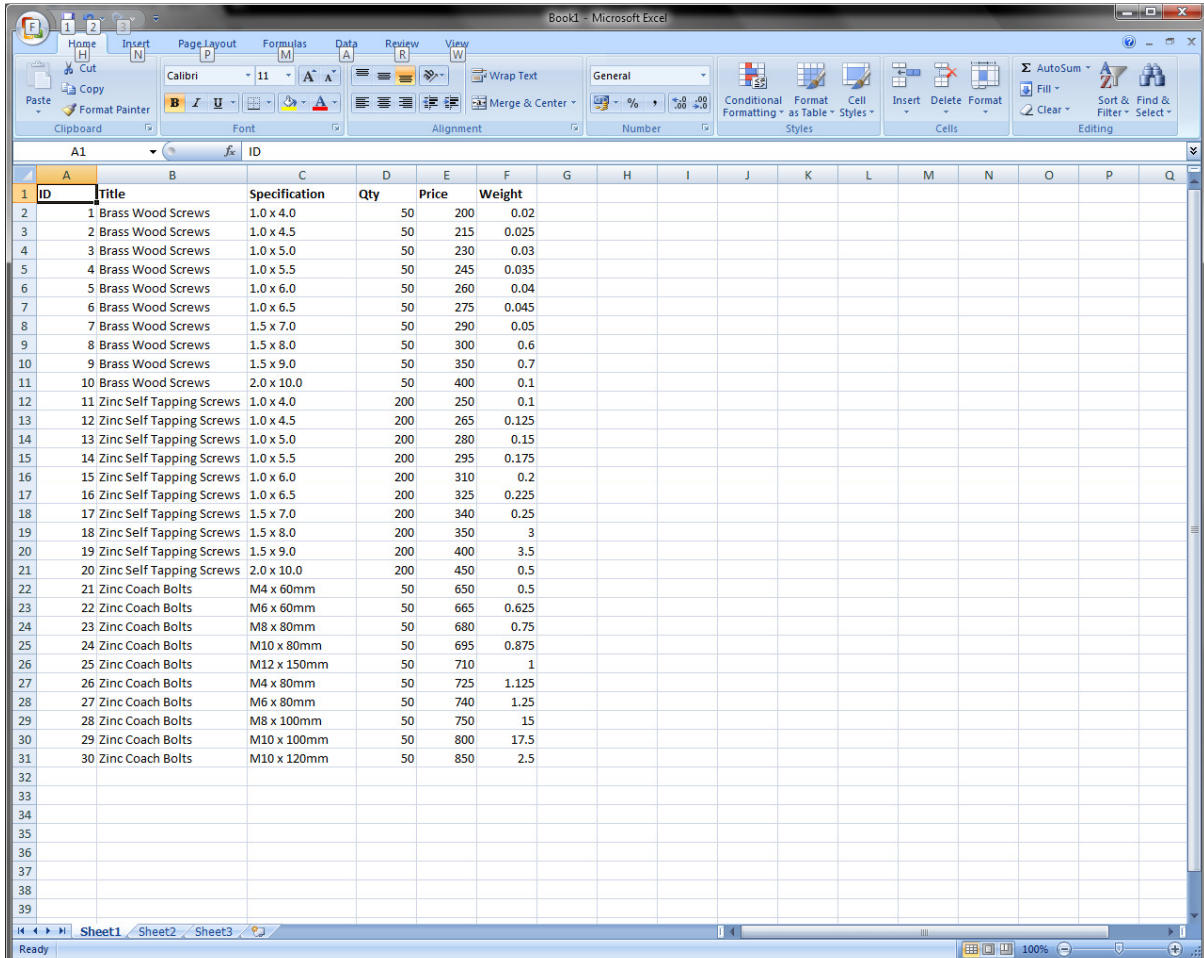
Label Direct Professional Databasing

To use Label Direct Professional with a database source, follow the instructions in this guide.

Firstly, you will want to create your database – which is just a simple table of information. You can do this using Microsoft Excel or Open Office (Libre Office) or using a simple text file saved in “CSV” format (comma separated values).

In this example, we are setting up a small hardware database.

Open Excel or Open Office Calc and put titles in your table for the information you want to include.



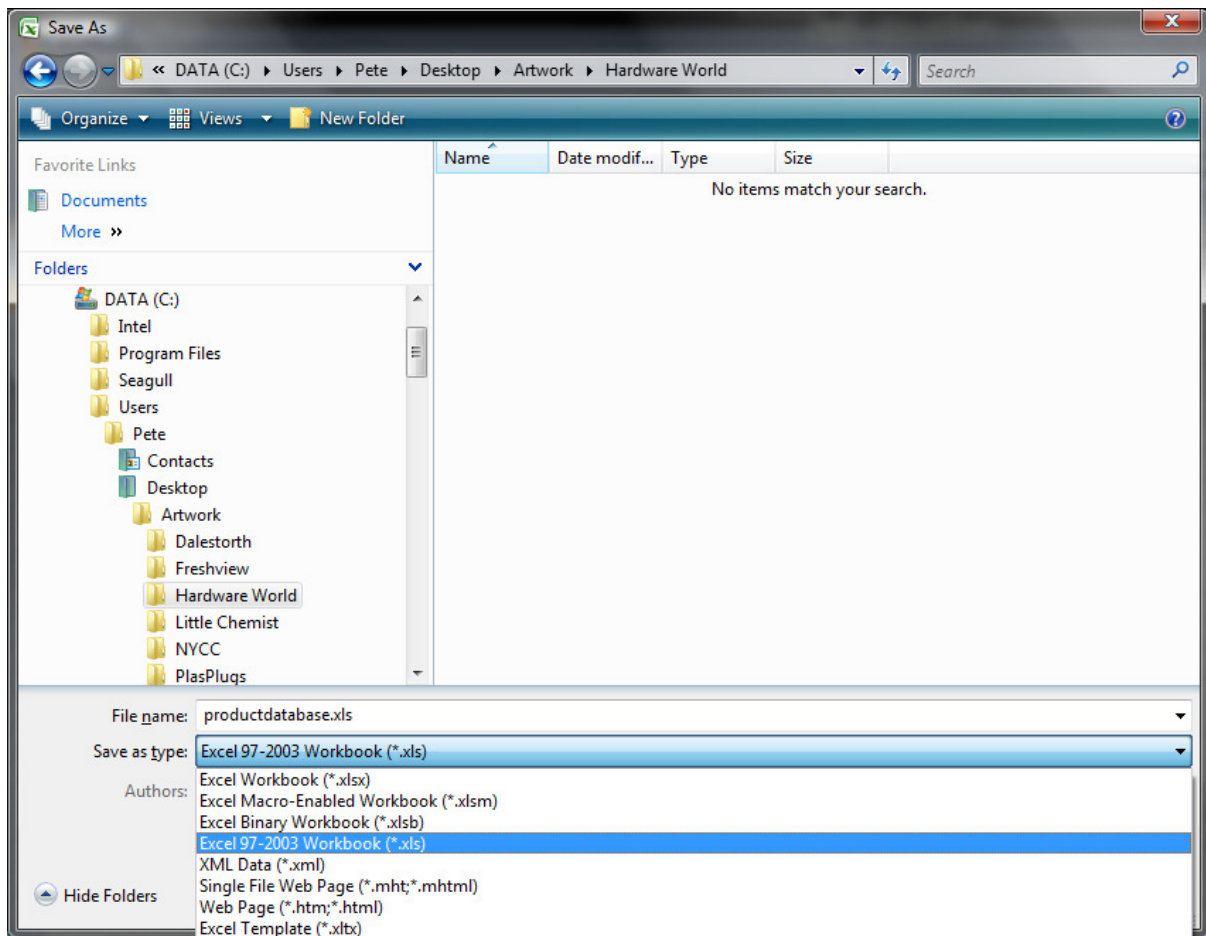
ID	Title	Specification	Qty	Price	Weight
1	Brass Wood Screws	1.0 x 4.0	50	200	0.02
2	Brass Wood Screws	1.0 x 4.5	50	215	0.025
3	Brass Wood Screws	1.0 x 5.0	50	230	0.03
4	Brass Wood Screws	1.0 x 5.5	50	245	0.035
5	Brass Wood Screws	1.0 x 6.0	50	260	0.04
6	Brass Wood Screws	1.0 x 6.5	50	275	0.045
7	Brass Wood Screws	1.5 x 7.0	50	290	0.05
8	Brass Wood Screws	1.5 x 8.0	50	300	0.6
9	Brass Wood Screws	1.5 x 9.0	50	350	0.7
10	Brass Wood Screws	2.0 x 10.0	50	400	0.1
11	Zinc Self Tapping Screws	1.0 x 4.0	200	250	0.1
12	Zinc Self Tapping Screws	1.0 x 4.5	200	265	0.125
13	Zinc Self Tapping Screws	1.0 x 5.0	200	280	0.15
14	Zinc Self Tapping Screws	1.0 x 5.5	200	295	0.175
15	Zinc Self Tapping Screws	1.0 x 6.0	200	310	0.2
16	Zinc Self Tapping Screws	1.0 x 6.5	200	325	0.225
17	Zinc Self Tapping Screws	1.5 x 7.0	200	340	0.25
18	Zinc Self Tapping Screws	1.5 x 8.0	200	350	3
19	Zinc Self Tapping Screws	1.5 x 9.0	200	400	3.5
20	Zinc Self Tapping Screws	2.0 x 10.0	200	450	0.5
21	Zinc Coach Bolts	M4 x 60mm	50	650	0.5
22	Zinc Coach Bolts	M6 x 60mm	50	665	0.625
23	Zinc Coach Bolts	M8 x 80mm	50	680	0.75
24	Zinc Coach Bolts	M10 x 80mm	50	695	0.875
25	Zinc Coach Bolts	M12 x 150mm	50	710	1
26	Zinc Coach Bolts	M4 x 80mm	50	725	1.125
27	Zinc Coach Bolts	M6 x 80mm	50	740	1.25
28	Zinc Coach Bolts	M8 x 100mm	50	750	15
29	Zinc Coach Bolts	M10 x 100mm	50	800	17.5
30	Zinc Coach Bolts	M10 x 120mm	50	850	2.5

Make sure you have a column with a unique identification number in it – in this example it is column A and the number just counts from 1 upwards.

Save the file in a place you know and under a name you want.

There is no real limit to the amount of information you can include in your table. This example has 30 records with 5 columns other than the ID columns, including title, specification, quantity, price (in MWK) and weight, but you can fill the entire spreadsheet if you like!

In this example the file is saved as productdatabase.xls in Excel 97-2003 (*.xls) format and this is recommended for all users. Open office allows you to save in this format.

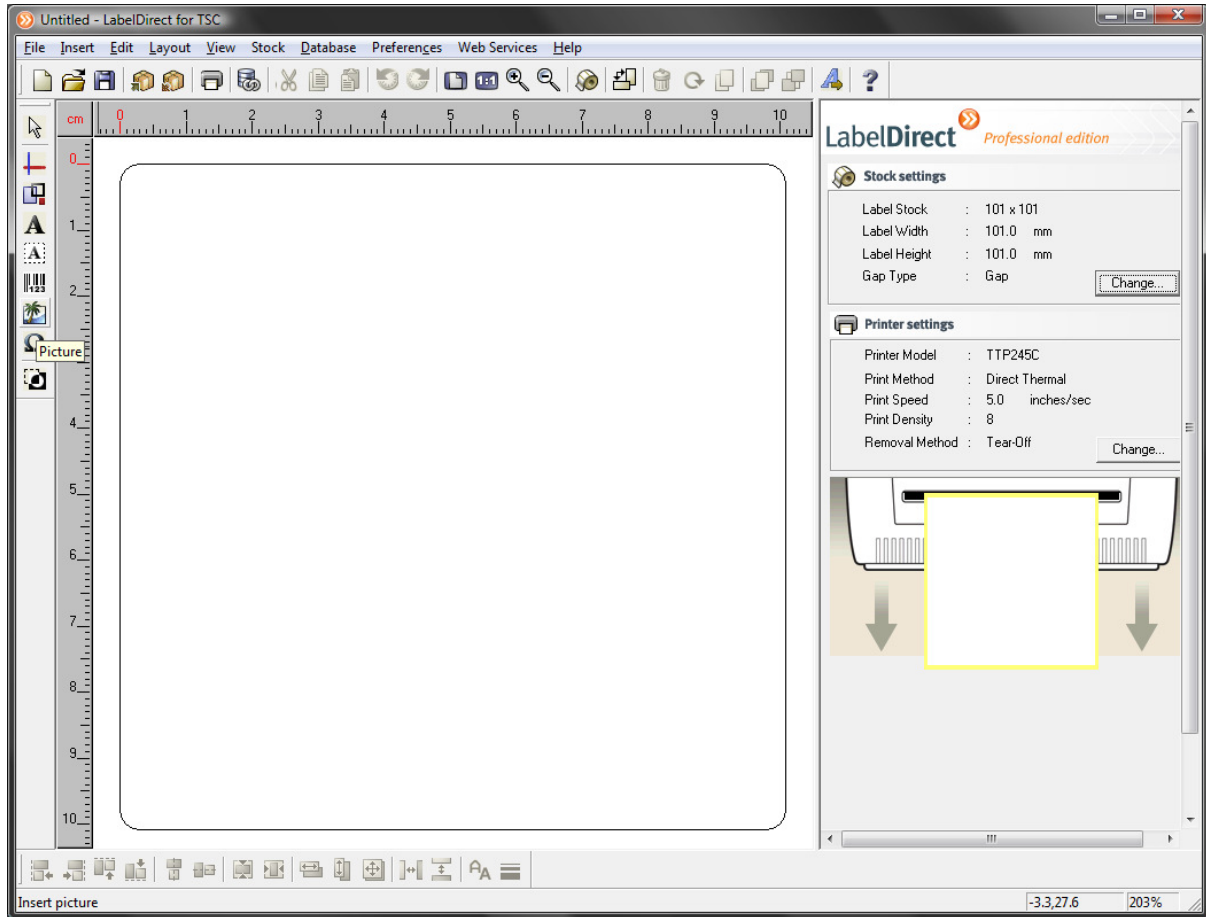


Now start Label Direct Professional

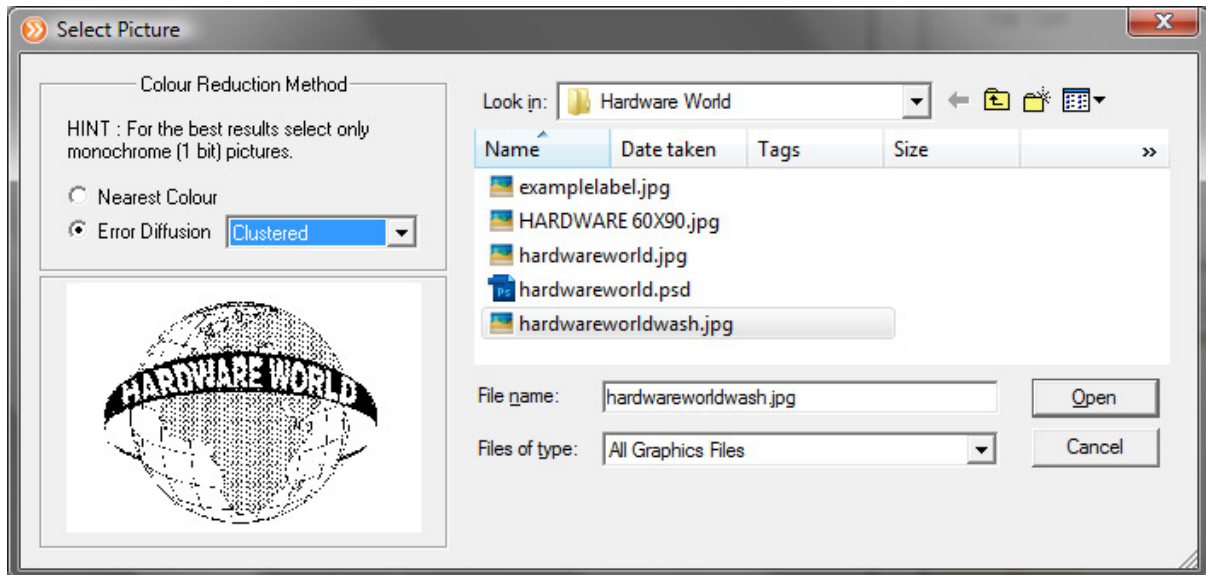
Set up your label stock (instructions are included with the printer on how to configure your label printer and label stock.)

In this example I am using a 4" printer and blank 4" x 4" (101mm x 101mm) labels.

Click the Image button on the left hand column: It has a picture of a palm tree.

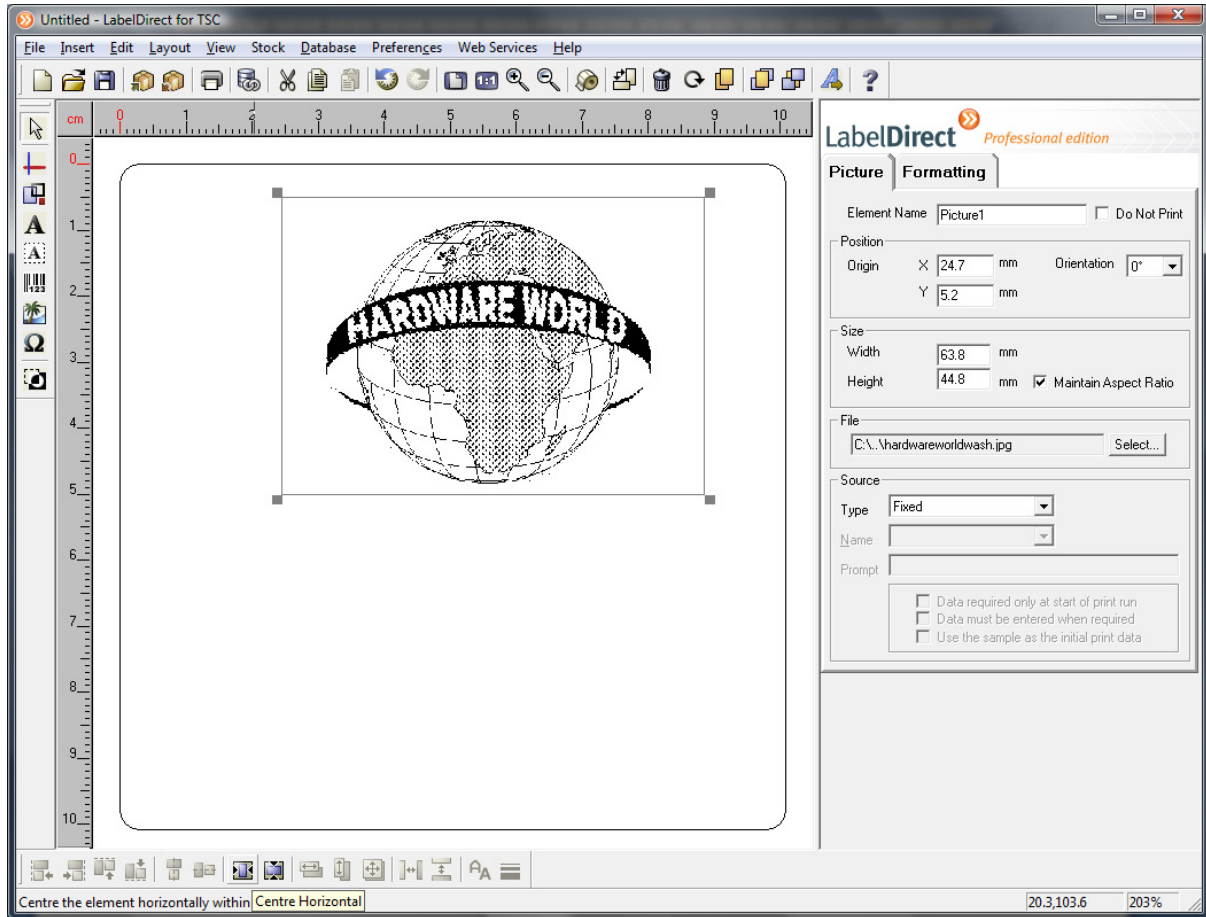


This will invoke the open dialogue:



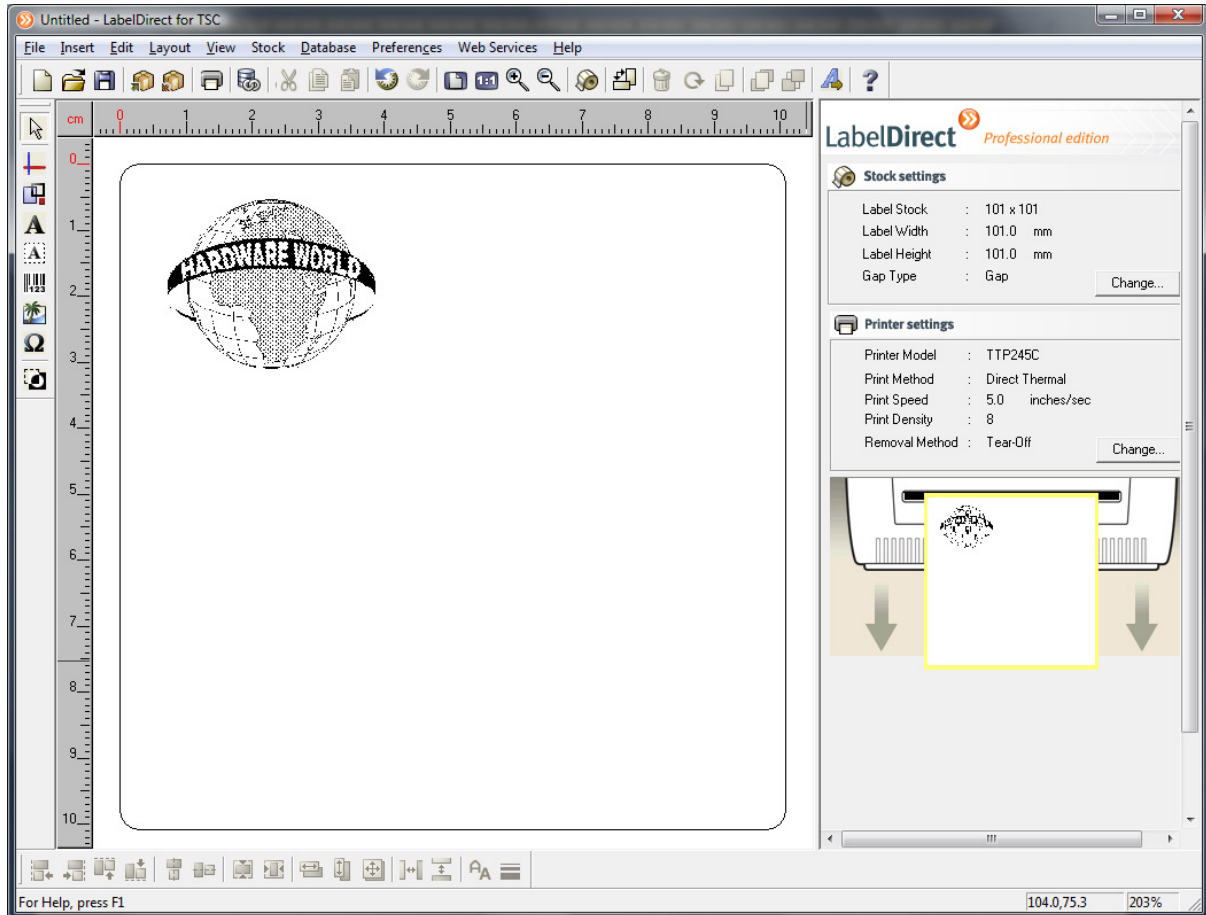
Select your image and then select an error diffusion type using the boxed area on the left if you want the printer to mimic colouration in grayscale.

Then click anywhere on your label to deposit the image on your label design.



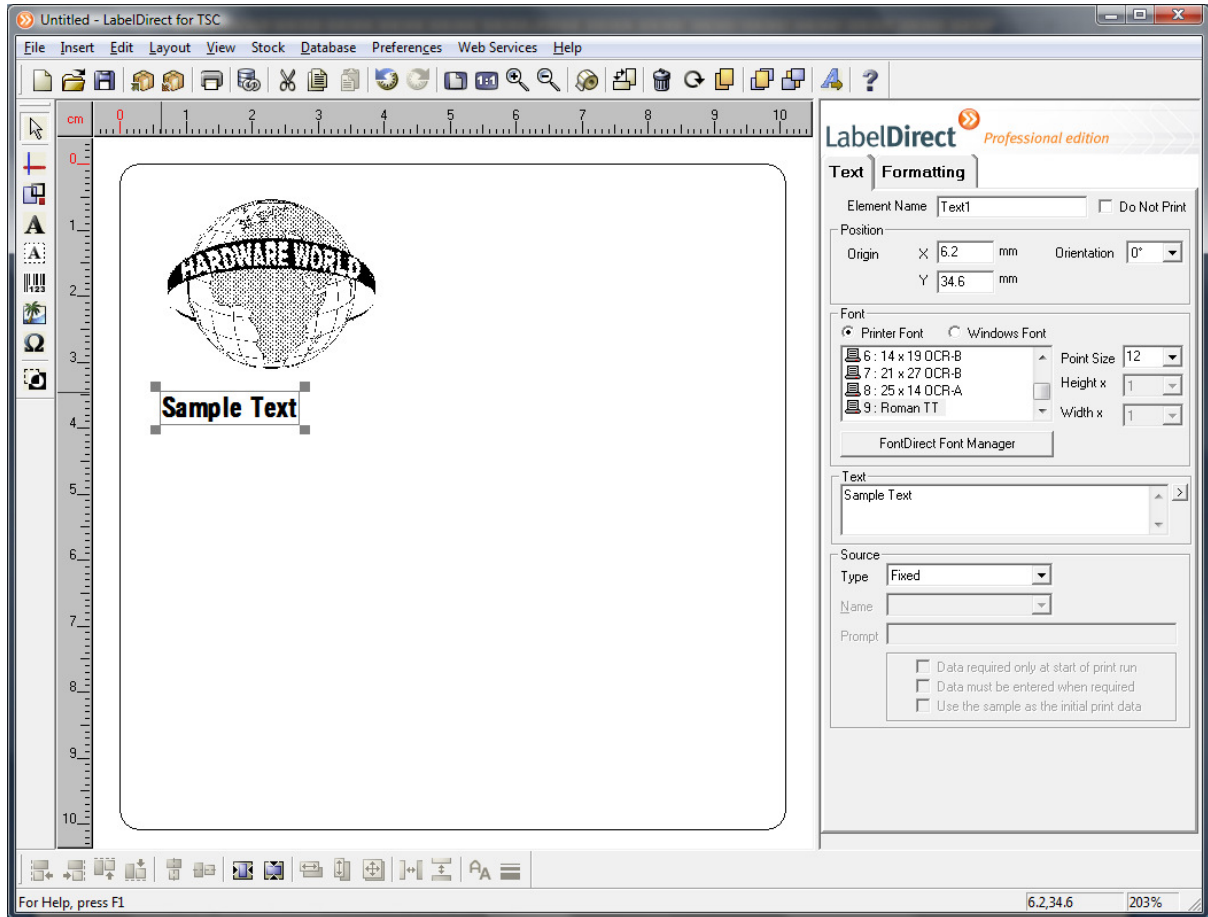
You can resize the image using the handles on each corner and center or align using the buttons on the bottom row of the window.

Example:

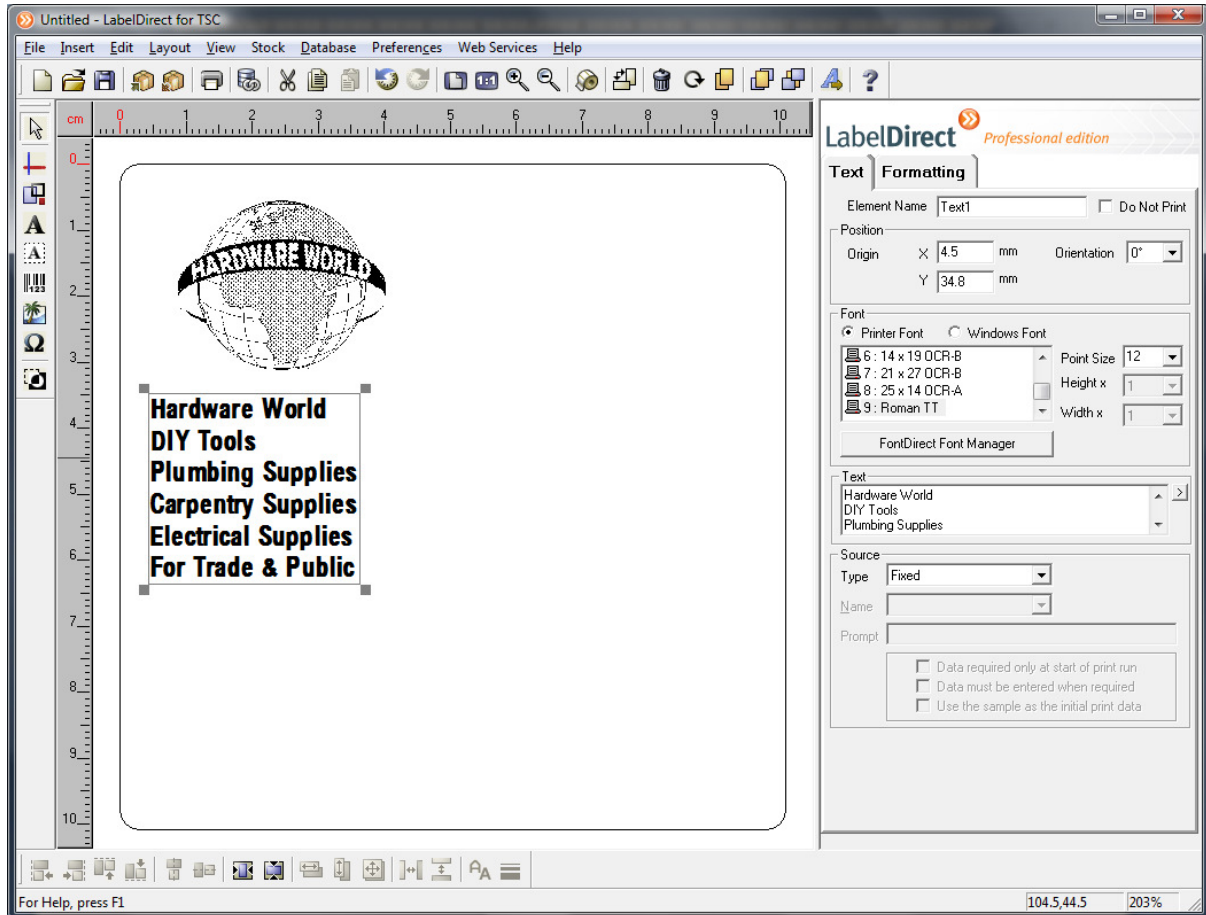


Now we will add plain text (non-variable) to the label design. In this case, information about the company:

Click the “**A**” button on the left hand column then position your cursor on the label and click to deposit a text ‘element’ on the label:

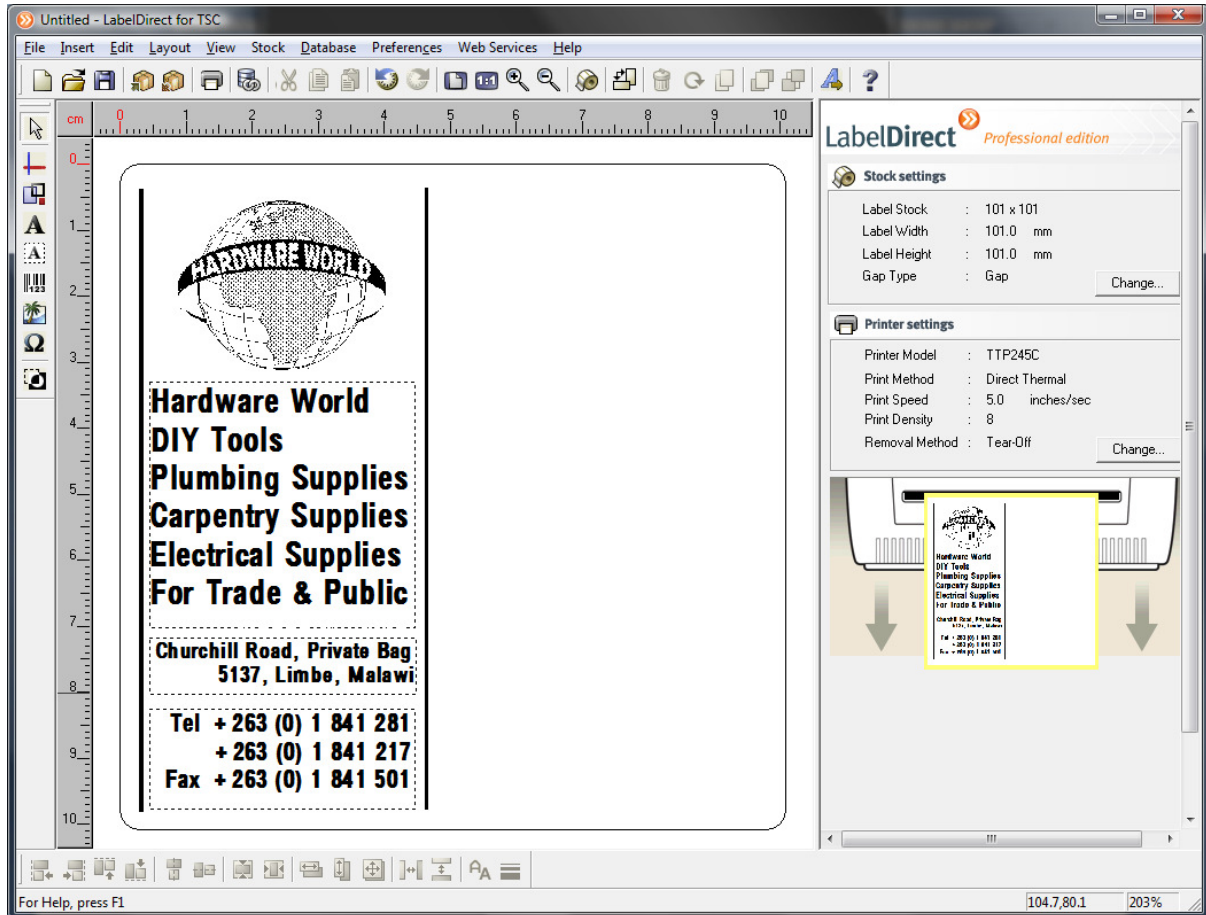


Now edit the text using the boxed area on the right hand side:



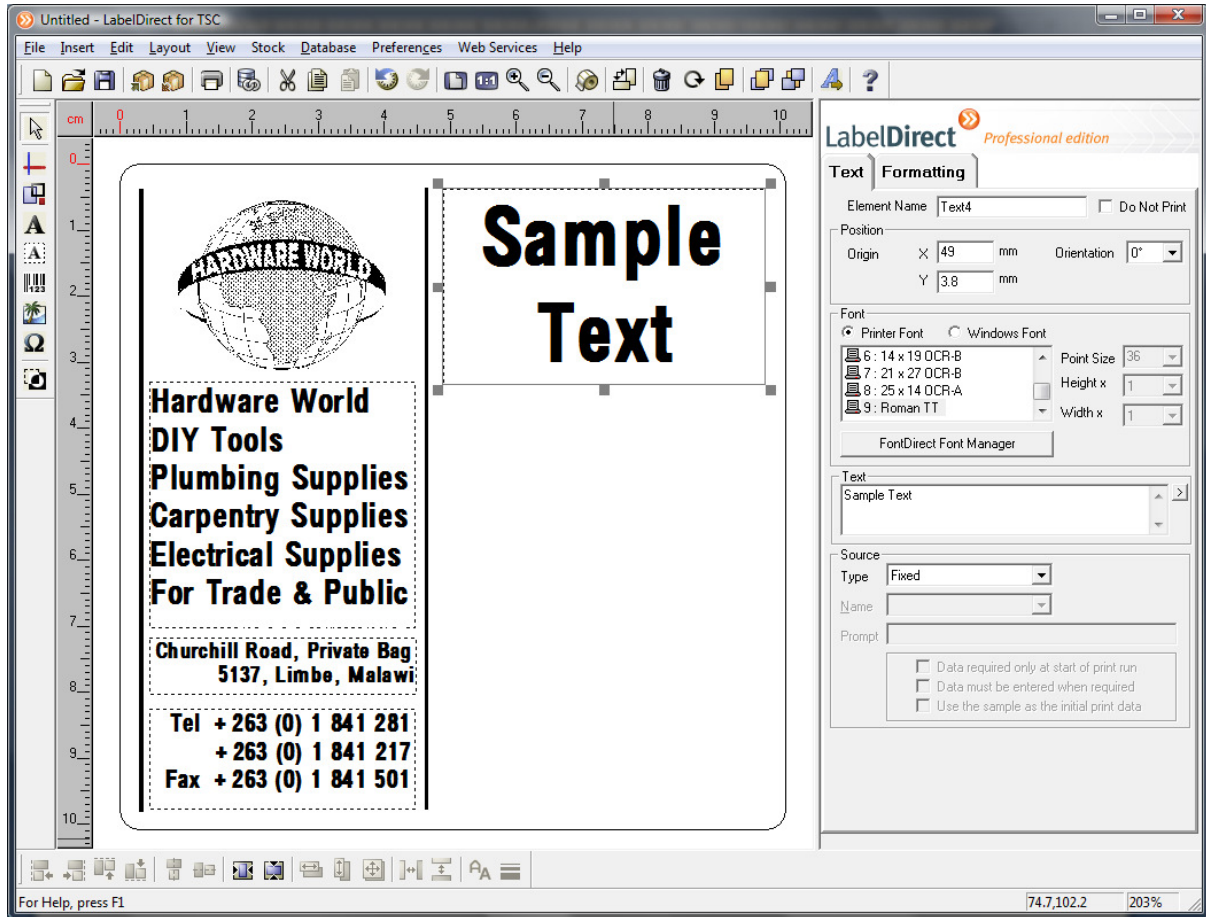
You can change the size and fit of this text element by clicking the Formatting tab top right then checking the Copy Text Within Frame option and adjusting the 'handles':

Repeat and add more text and lines using the buttons on the left hand side:

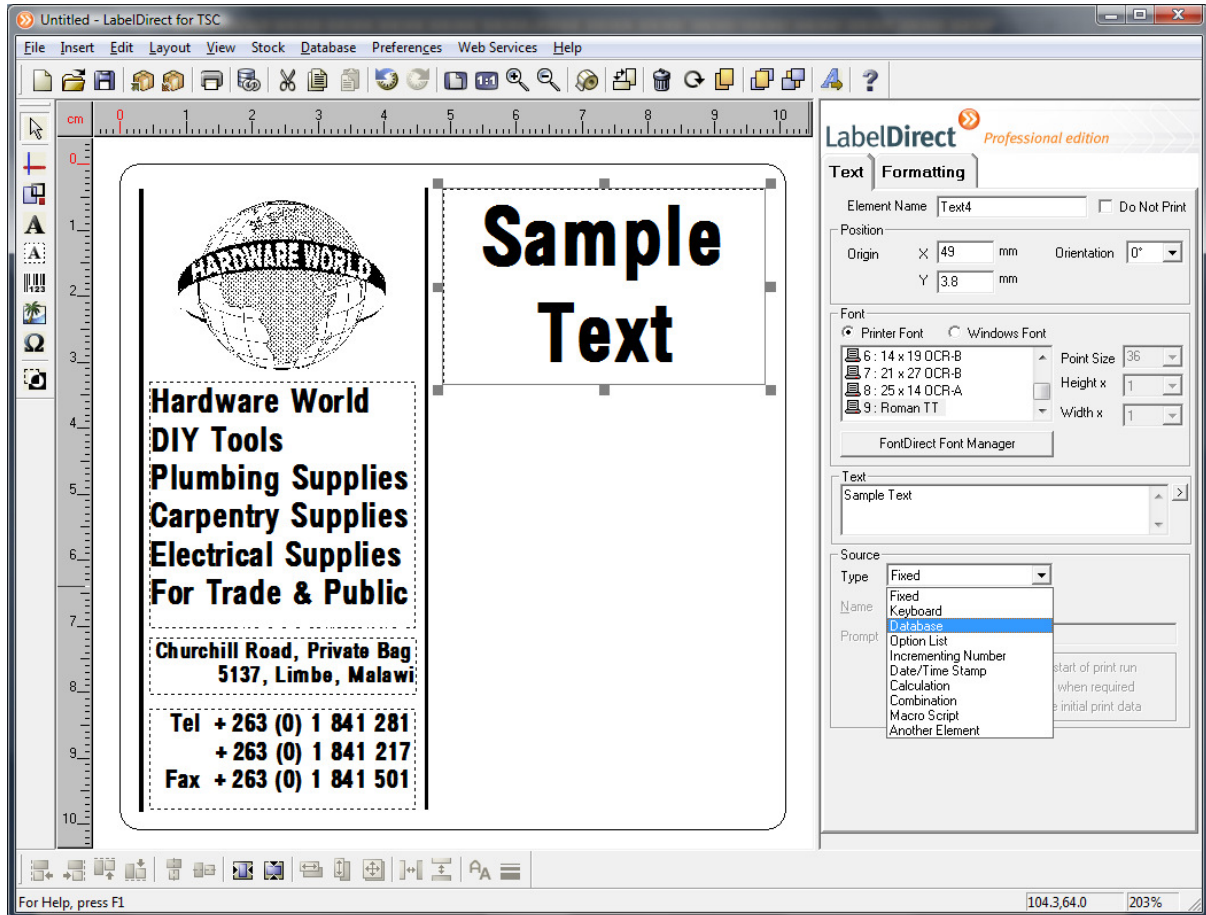


Now add variable data from the Database table we made earlier.

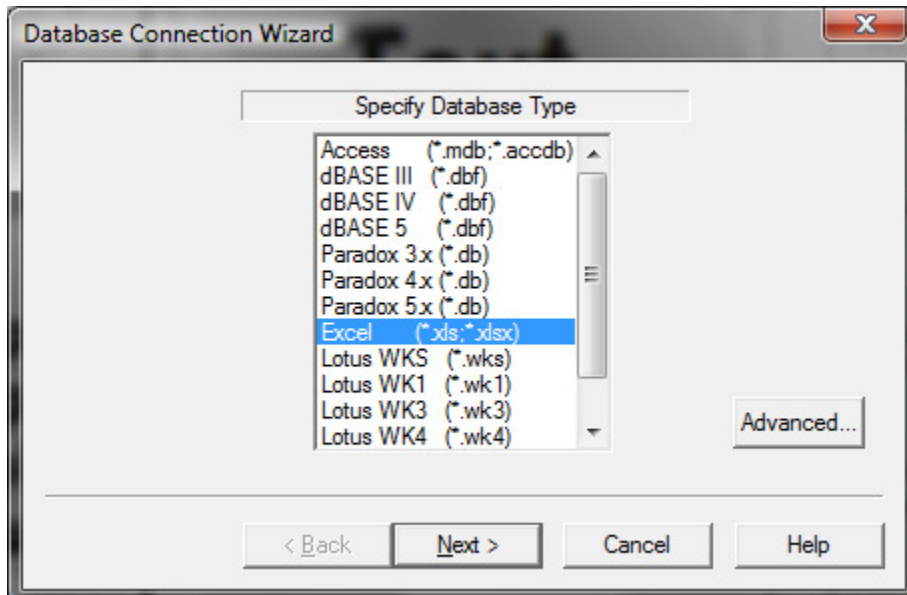
Add another text box using the “A” button and adjust to a suitable size for our product title:



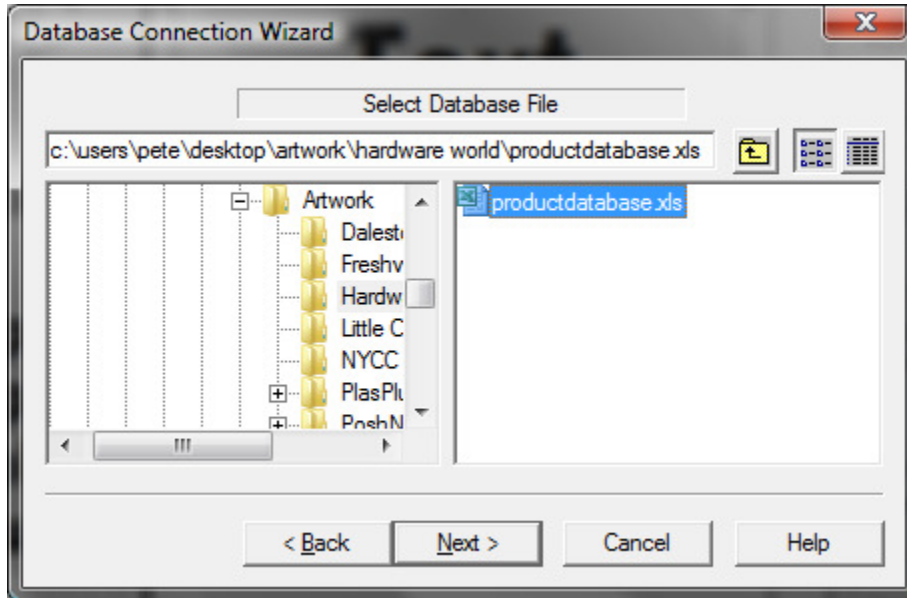
On the right hand side of the page is a drop down box in a frame titled “Source” with the word “Fixed” in it. Click it and select “Database” from the list:



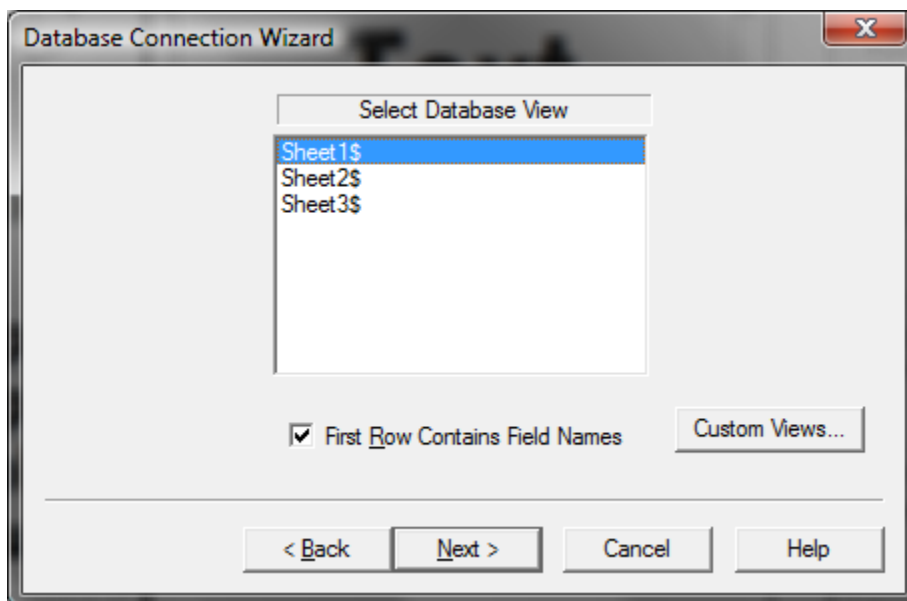
This invokes the Database Connection Wizard:



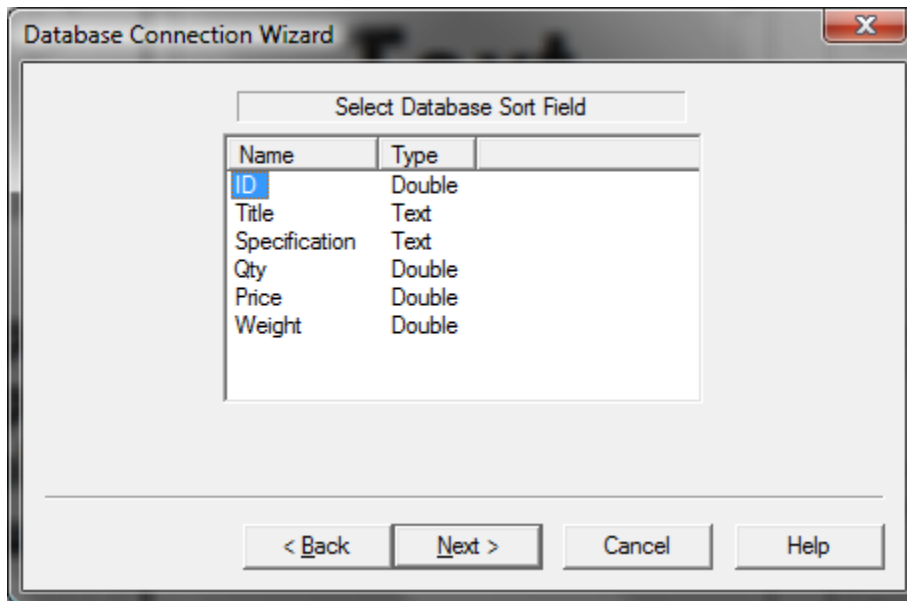
Select Excel and click Next, then browse to your database file that you saved earlier:



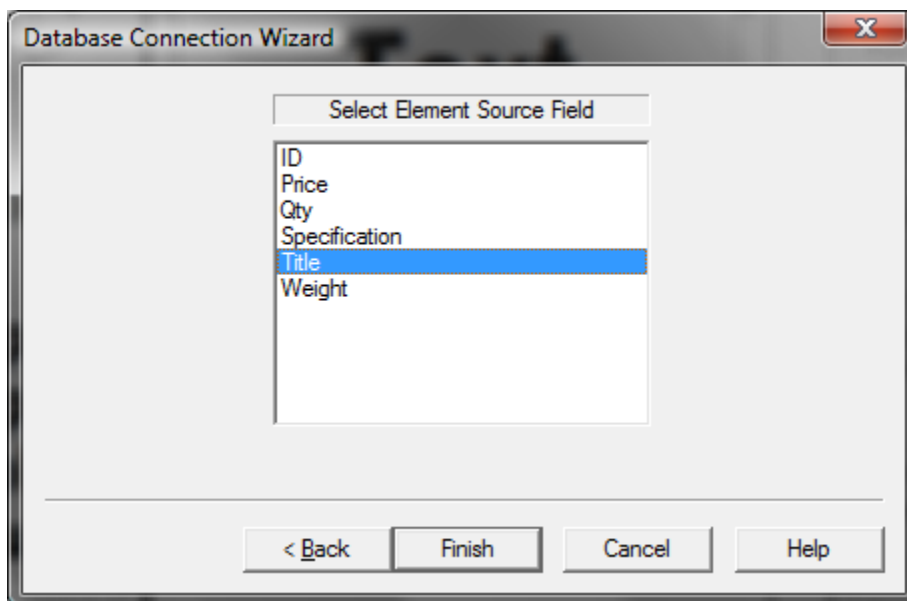
And click Next



And Next again

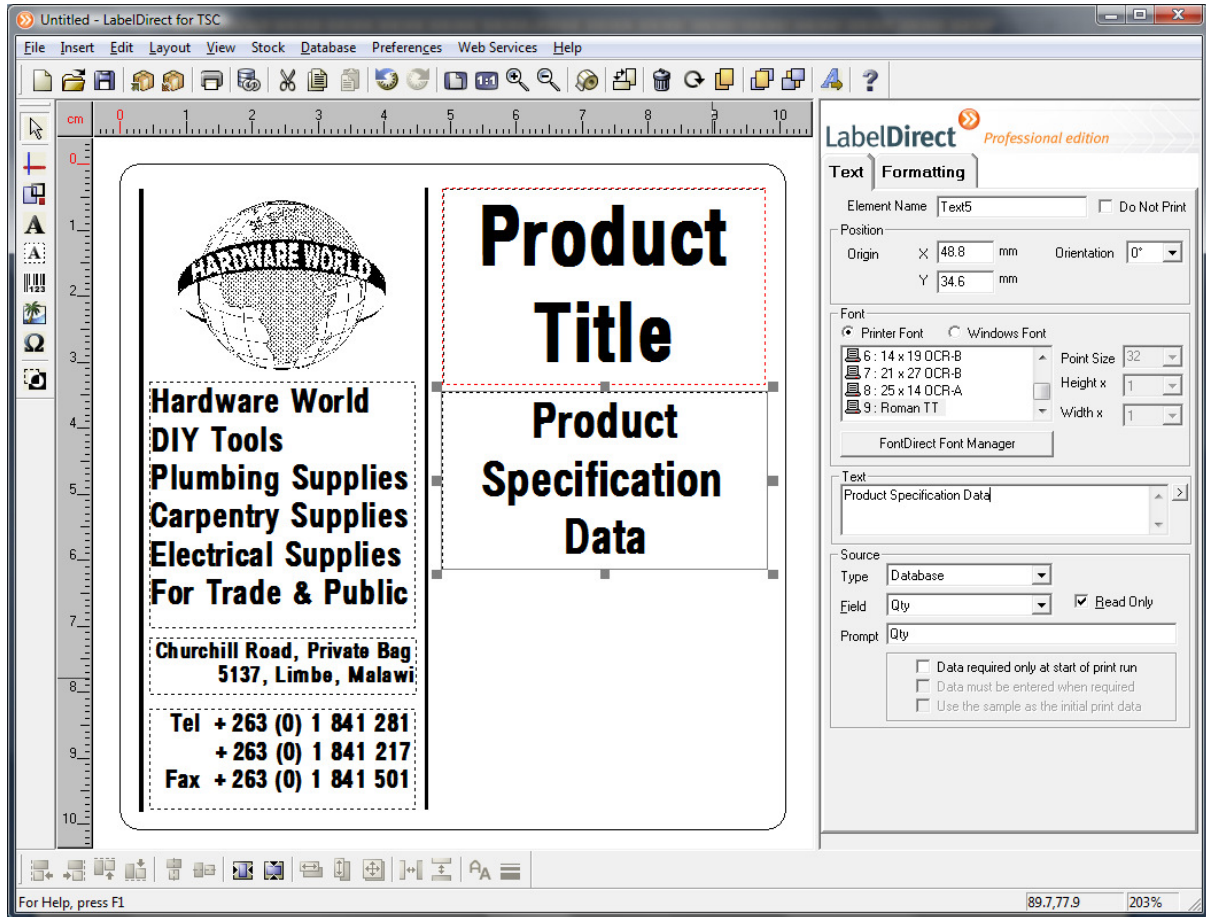


Then select the item you want in this text element – in this case the title of the product.

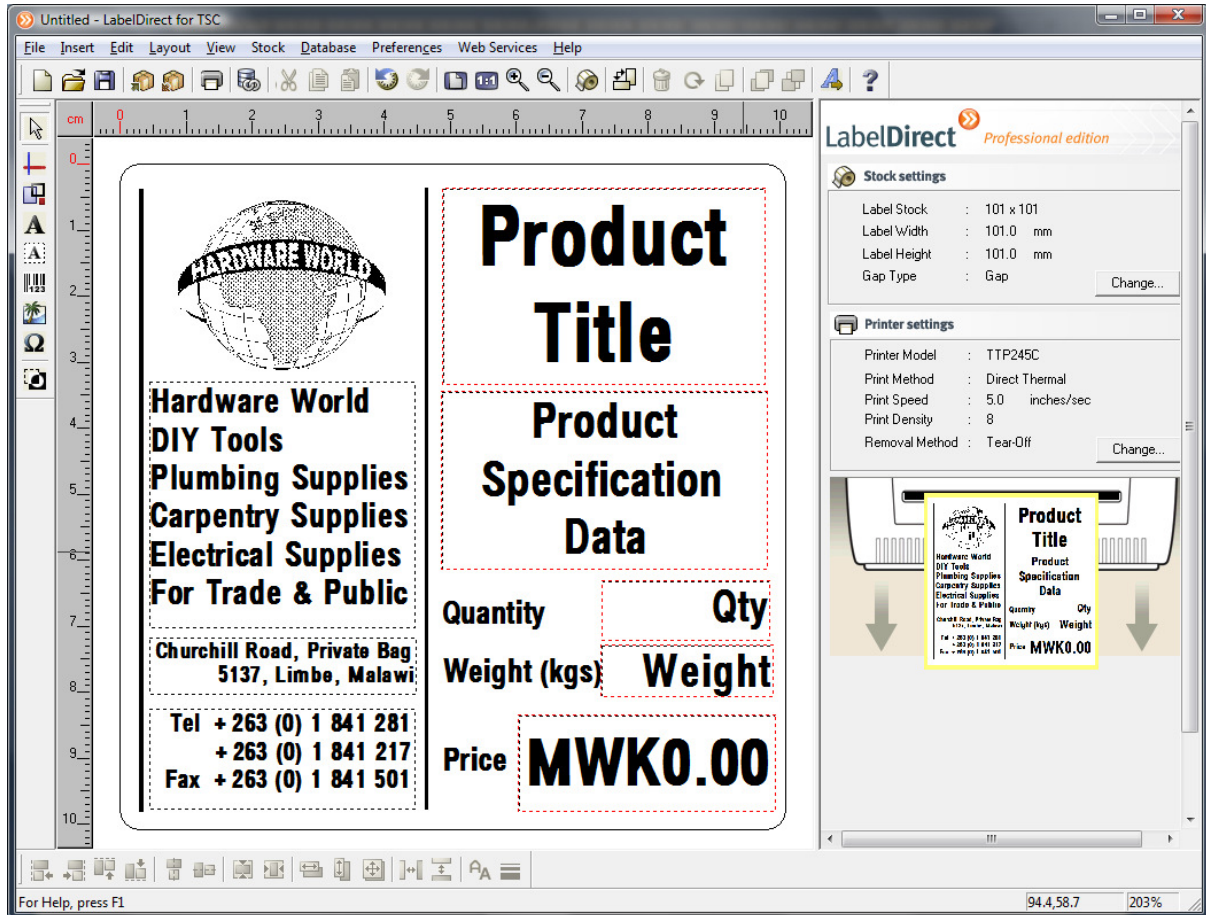


And click Finish

Repeat the process for the other elements on your label. You can give the elements a name by changing the "sample text" to what the text box represents

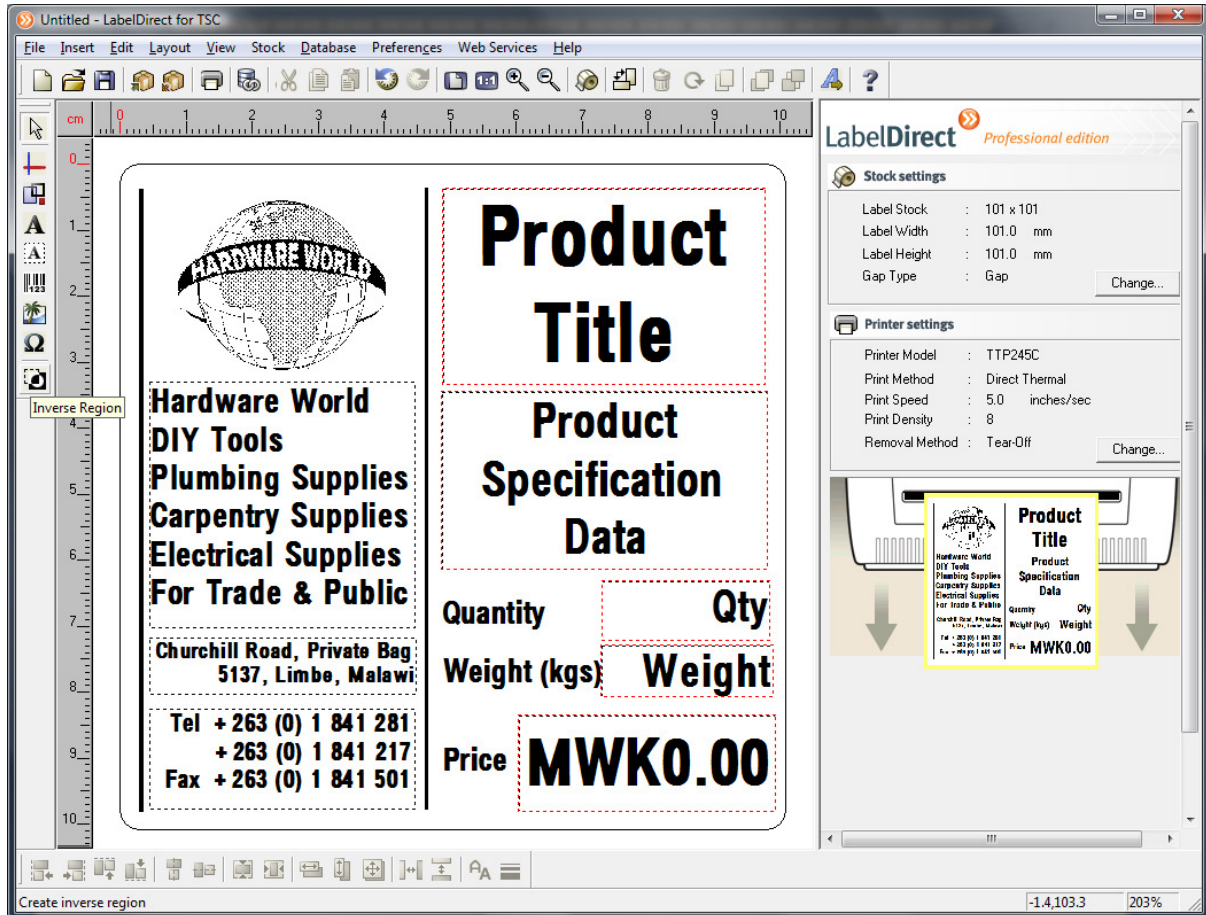


Continue until you have all the information you want on the label:

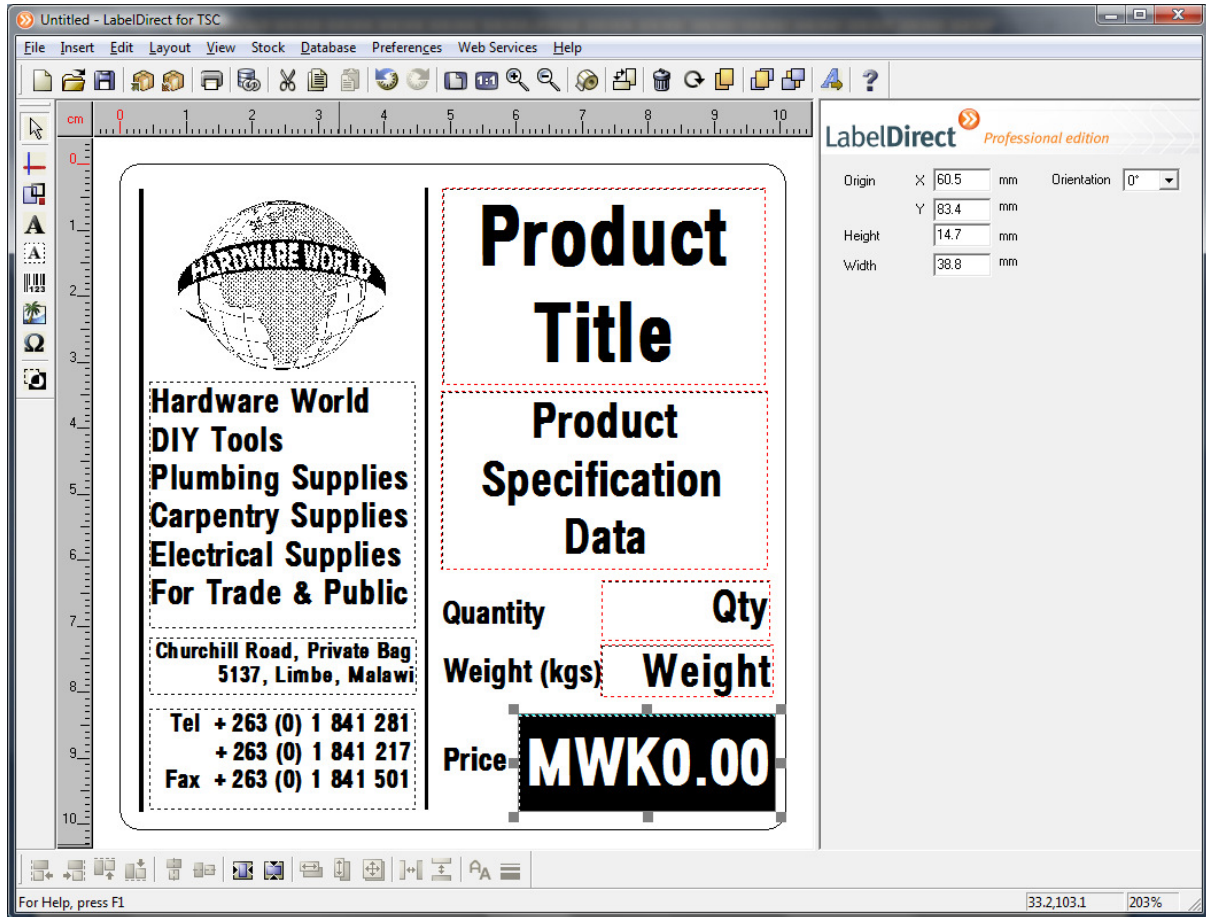


You can emphasise certain areas by revering the print.

Click the "Inverse Region" button



And drag over the area you wish to inverse:



Now click the print button on the top menu (image of a printer)

This takes you to the print direct area, where you can click through your database records using the controls on the right hand side of the page.

The screenshot shows the LabelDirect for TSC software interface. The main window displays a label design for 'Zinc Coach Bolts'. The label includes the Hardware World logo, contact information for Hardware World (Churchill Road, Private Bag 5137, Limbe, Malawi), and product details: Zinc Coach Bolts, M12 x 150mm, Quantity 50, Weight (kgs) 1, and Price MWK 710.00. The right-hand control panel allows for editing the label's title, specification, quantity, weight, and price. It also features a record navigation section with buttons for Save, Delete, Print All, and Make a Print List... The bottom right of the control panel has buttons for Return to Label Design and Print. The status bar at the bottom shows 'For Help, press F1', '90,3,46.6', and '223%'.

You can either print single records by clicking the Print button at the bottom right

Or

1 copy of every record by clicking the Print all button (confirmation will be asked)

Or

You can make a print list...

Print List

Database (30 Records)							
ID	Title	Specification	Qty	Price	Weight		
21	Zinc Coach Bolts	M4 x 60mm	50	650	0.5		
22	Zinc Coach Bolts	M6 x 60mm	50	665	0.625		
23	Zinc Coach Bolts	M8 x 80mm	50	680	0.75		
24	Zinc Coach Bolts	M10 x 80mm	50	695	0.875		
25	Zinc Coach Bolts	M12 x 150mm	50	710	1		
26	Zinc Coach Bolts	M4 x 80mm	50	725	1.125		
27	Zinc Coach Bolts	M6 x 80mm	50	740	1.25		
28	Zinc Coach Bolts	M8 x 100mm	50	750	15		
29	Zinc Coach Bolts	M10 x 100mm	50	800	17.5		
30	Zinc Coach Bolts	M10 x 120mm	50	850	2.5		

Print List (5 Labels)							
Copy Qty	ID	Title	Specification	Qty	Price	Weight	
2	1	Brass Wood Screws	1.0 x 4.0	50	200	0.02	
4	11	Zinc Self Tapping Sc	1.0 x 4.0	200	250	0.1	
5	21	Zinc Coach Bolts	M4 x 60mm	50	650	0.5	
7	22	Zinc Coach Bolts	M6 x 60mm	50	665	0.625	
2	28	Zinc Coach Bolts	M8 x 100mm	50	750	15	

Saved Print Lists
 Name:

By selecting individual items and then telling the system how many you want to print.

You can also save the list by typing a name in and clicking the Save button. The print list will be available for the future.

When finished, Return to label design and **SAVE YOUR LABELS!**