

## Installing Printer & LabelDirect

### STEP 1 INSTALLING PRINTER DRIVERS

You must first install the TSC drivers for your printer.

Plug in and power up your printer

Connect the printer and computer using the USB cable

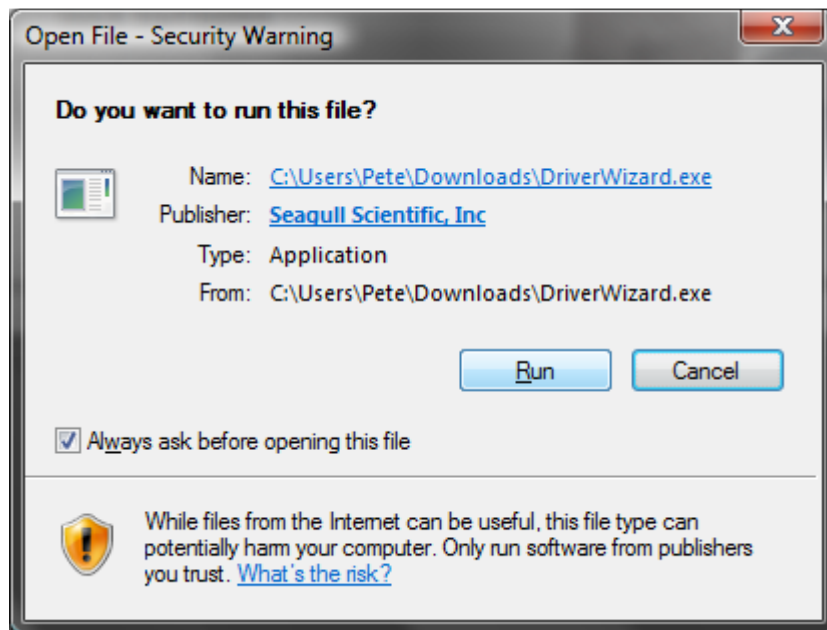
**DO NOT use Windows own software to install the printer and cancel any attempt your computer makes to install the printer automatically.**

Place the TSC driver disc that came with your printer in your computer optical drive and allow it to run the bartender program. (If it does not do this automatically, browse to your optical drive and execute the bartender.htm file).

Select the “Windows Driver Setup” option.

This will download DriverWizard.exe

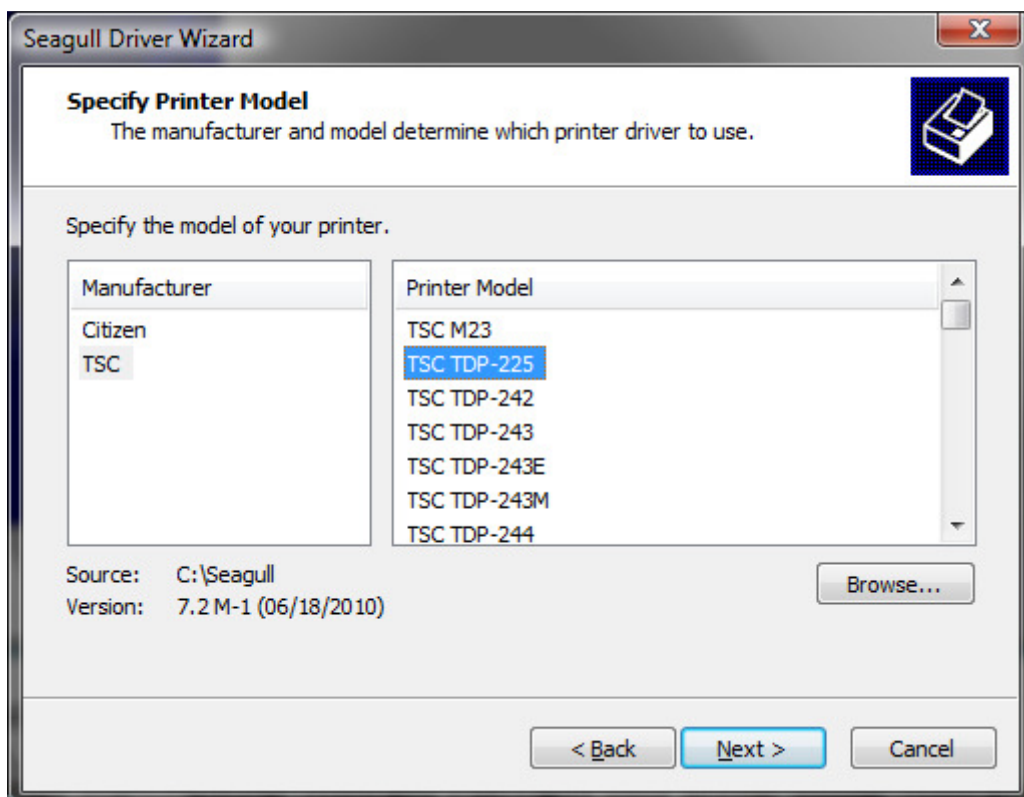
Save this to your disk drive in a known location and execute this program:



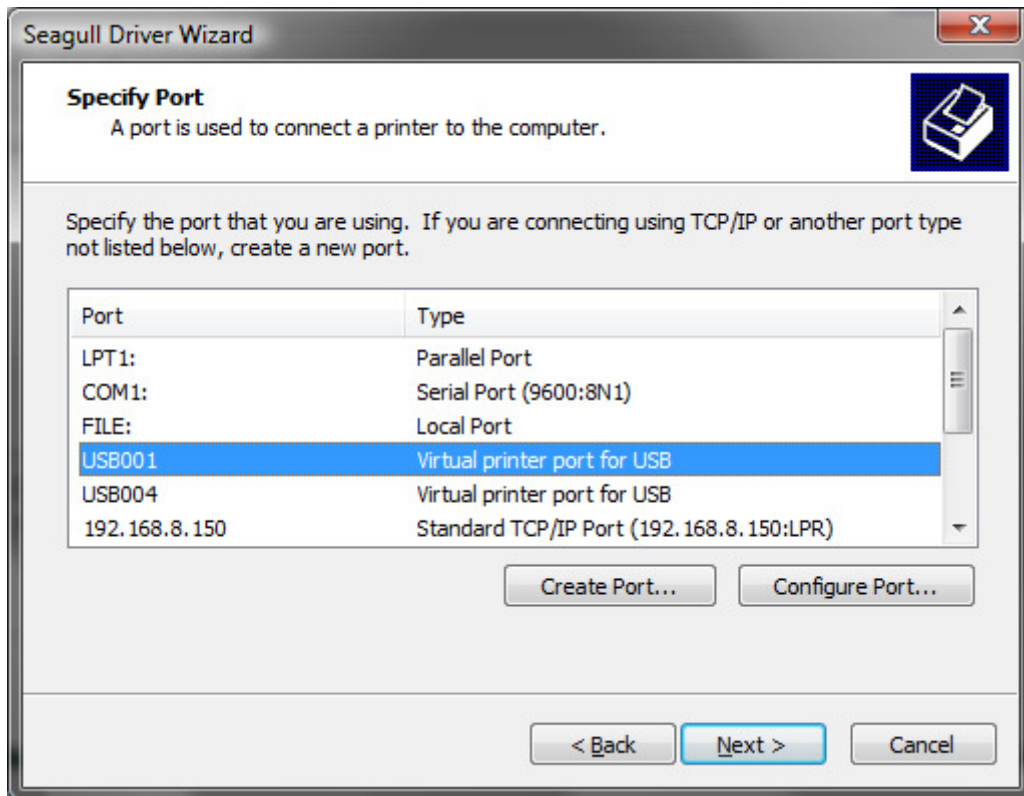
Click the Run button



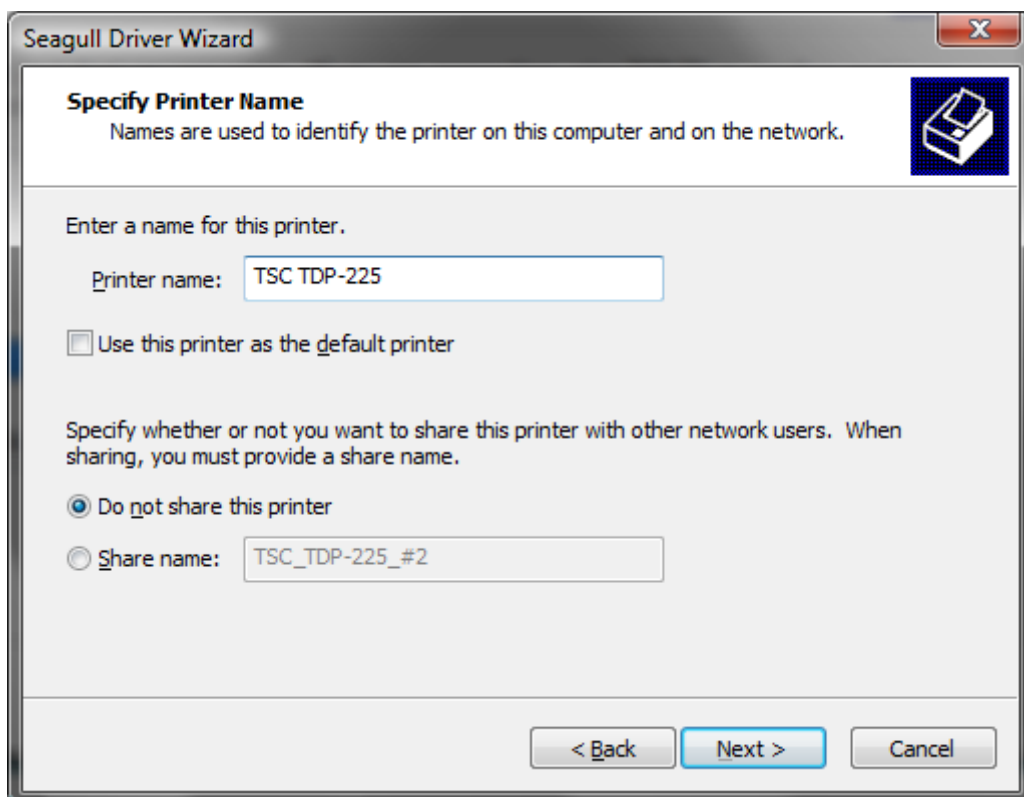
Select the Install printer drivers option and click Next



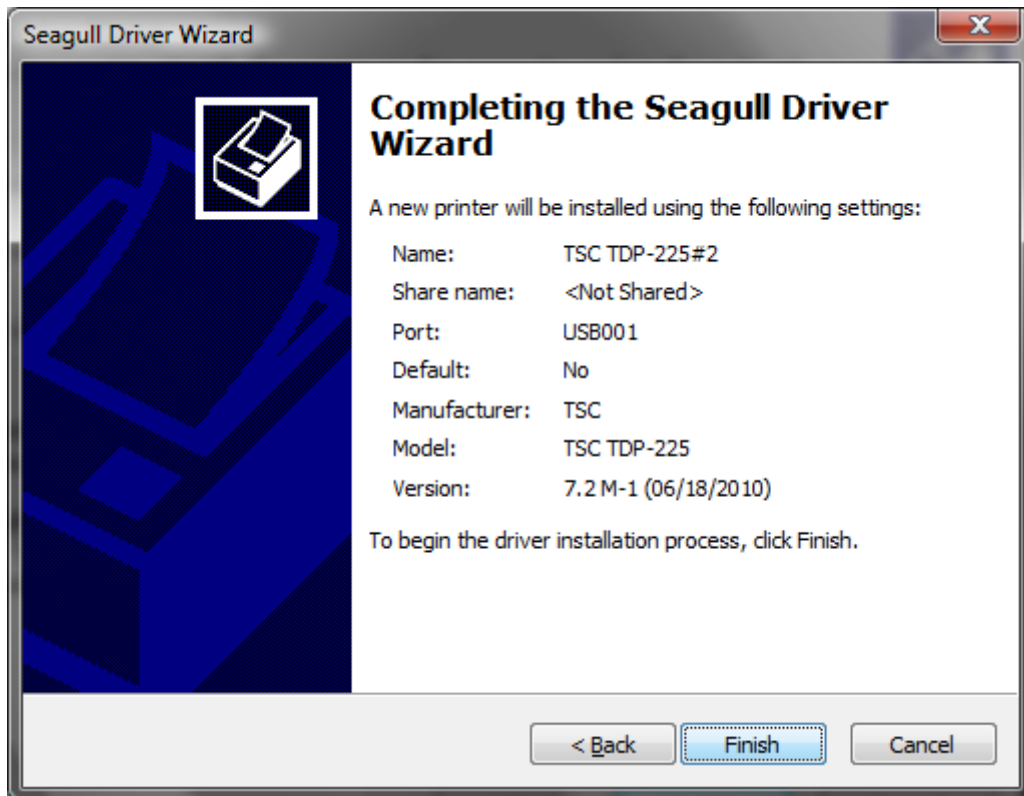
Select the printer manufacturer (typically TSC) and your printer model (typically TSC TDP-225 or TSC TDP-245C)



Select the port you want to install on (typically a USB port)

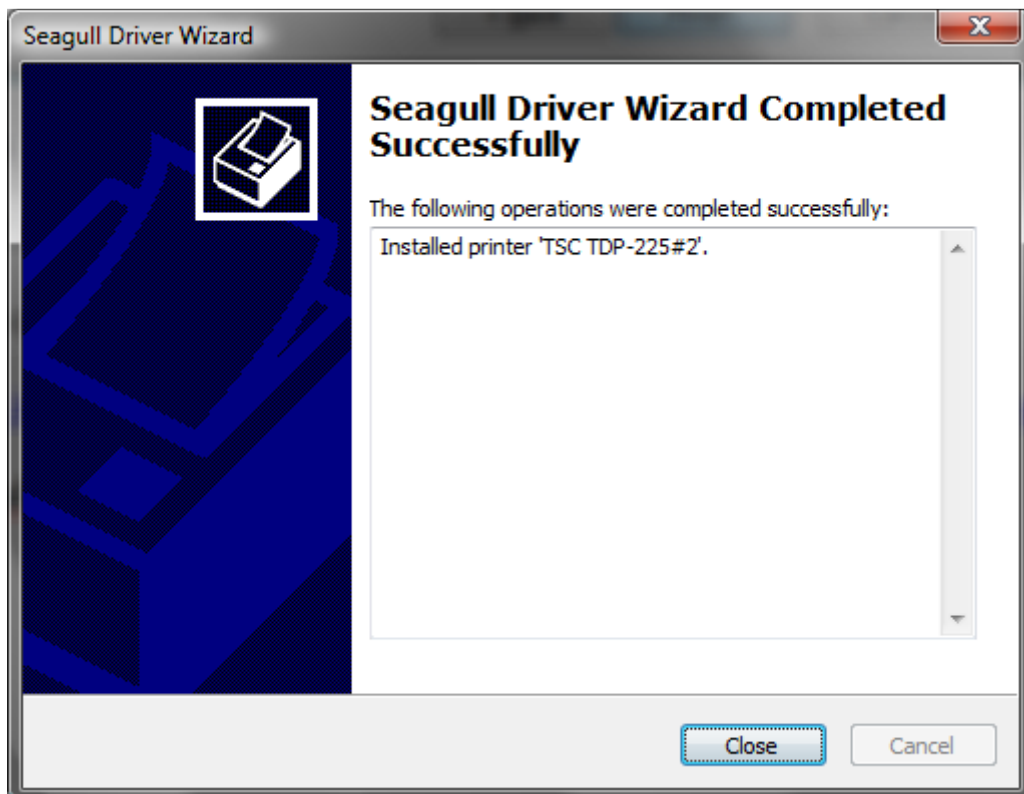


Give the printer a name (or just accept the automatically assigned name) and click Next



Click Finish

Drivers for the printer will now be installed.



Click Close

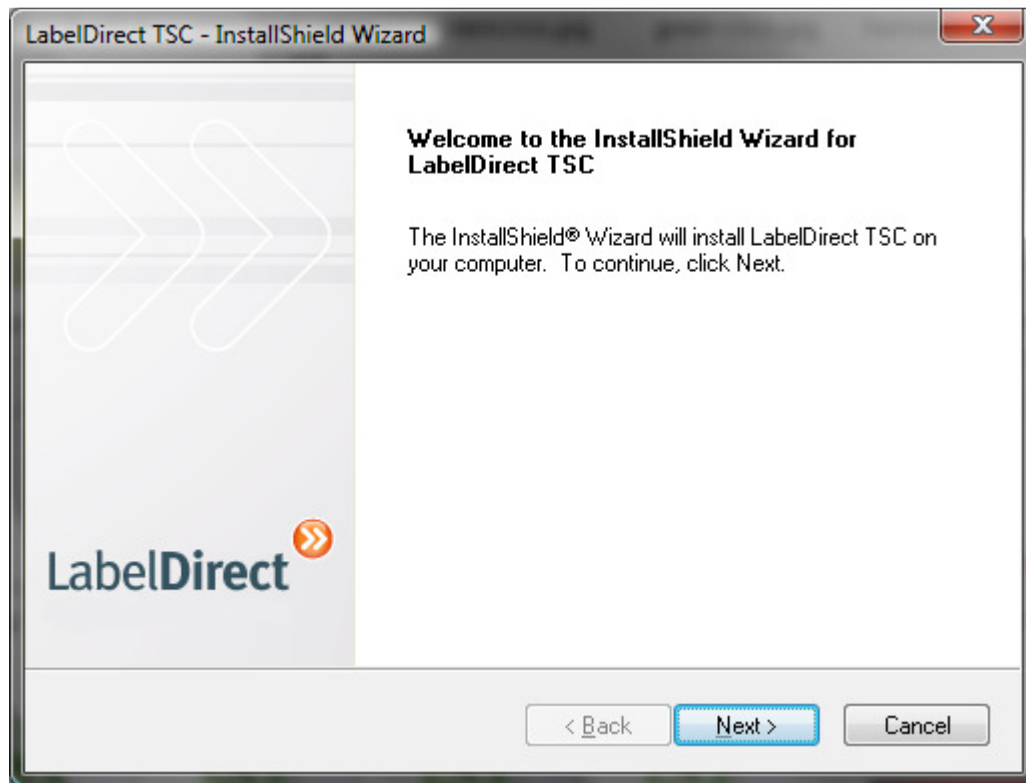
## STEP 1 INSTALLING LABELDIRECT

Download your copy of LabelDirect Pro from the following location.

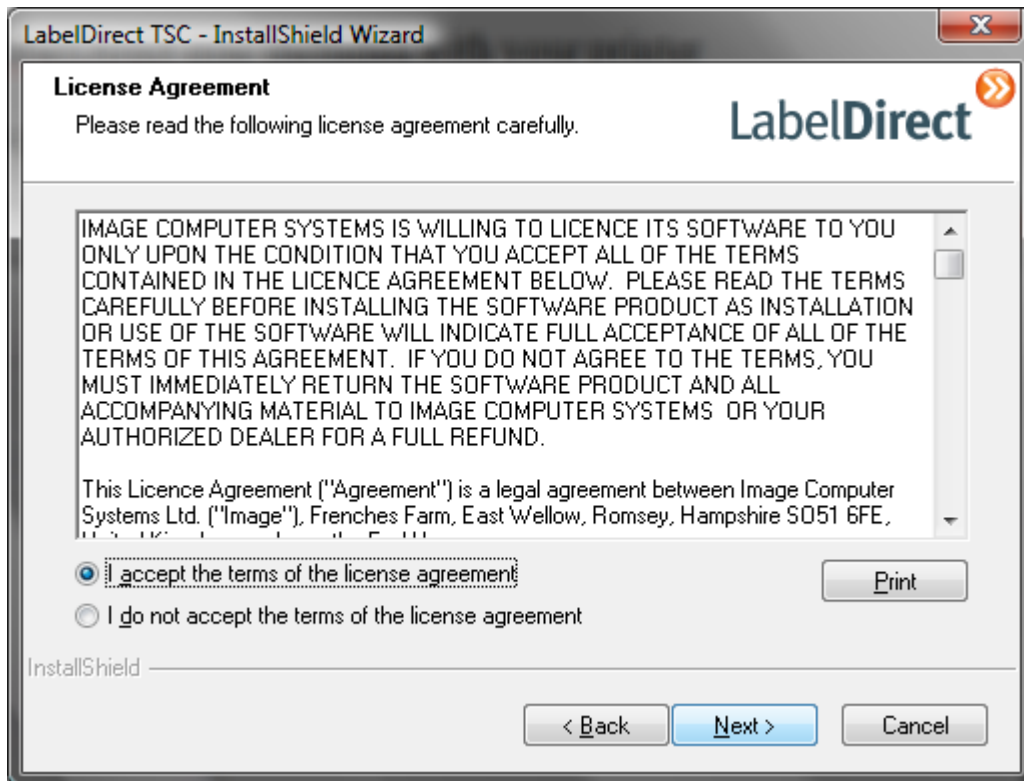
[http://www.imagecomputersystems.com/downloads/labeldirect/labeldirect\\_tsc.exe](http://www.imagecomputersystems.com/downloads/labeldirect/labeldirect_tsc.exe)

or use the LabelDirect disc included with your printer

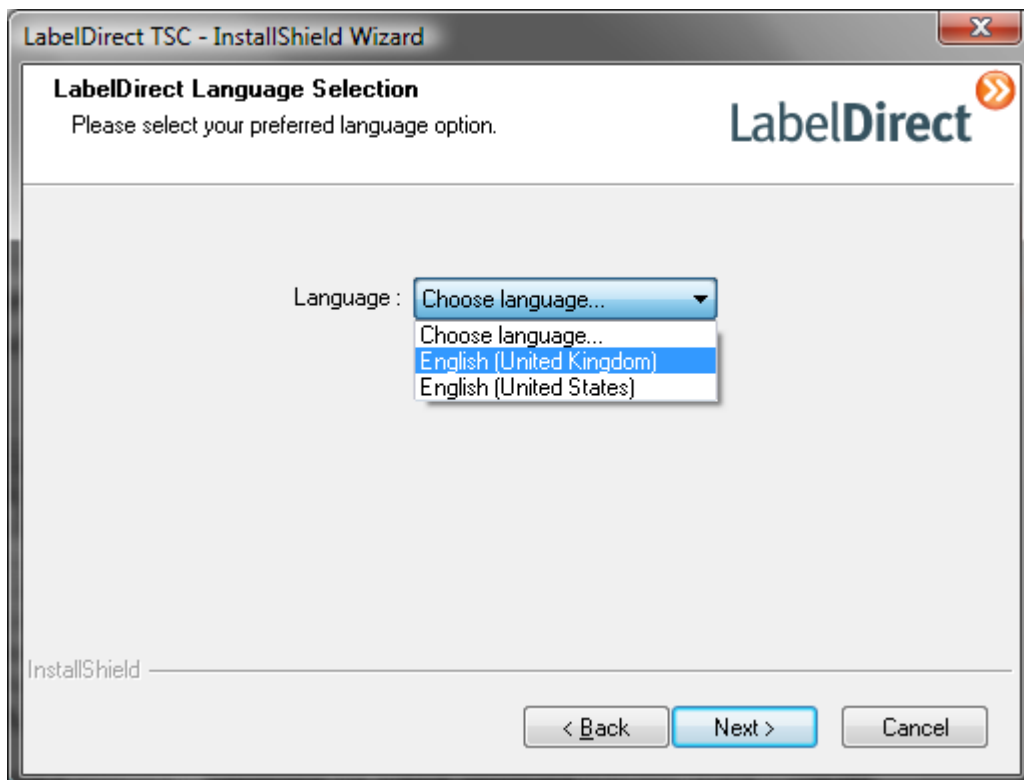
Run the Setup program



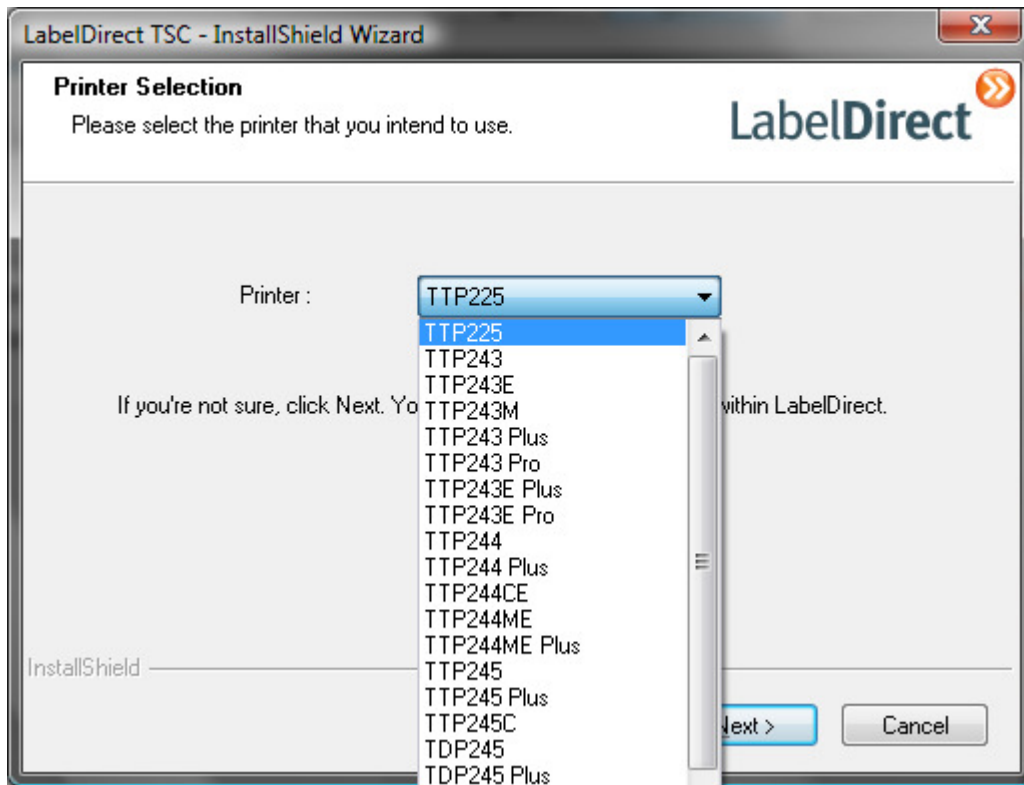
Click Next



Accept the licence and click Next

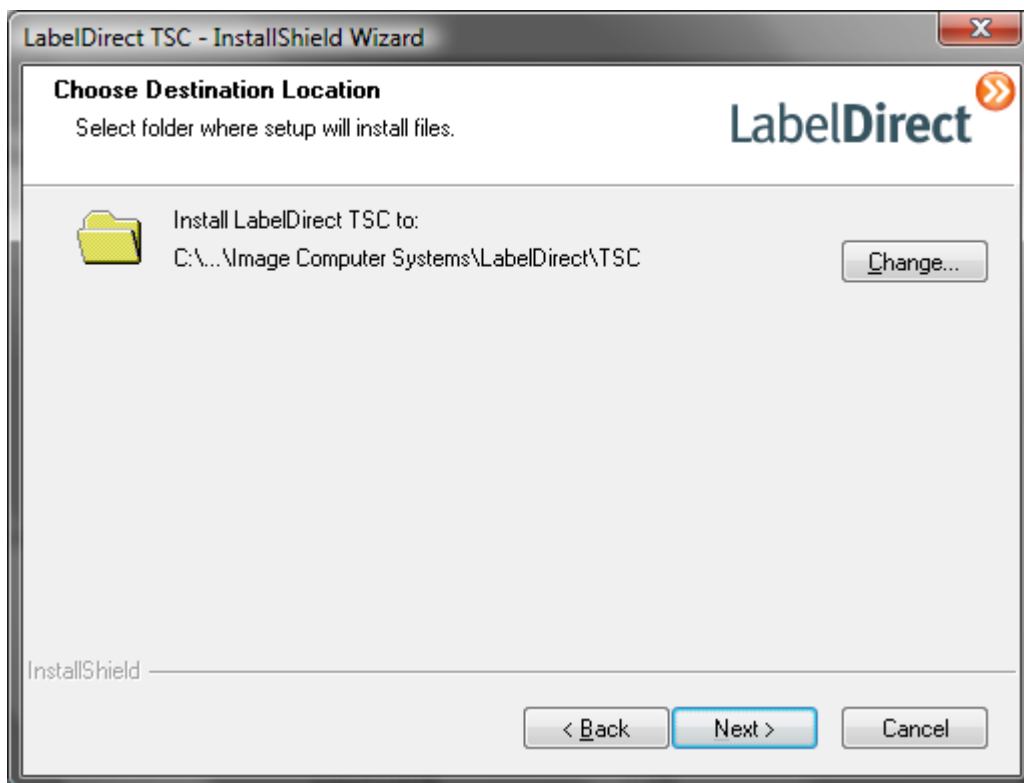


Select a Language option and click Next

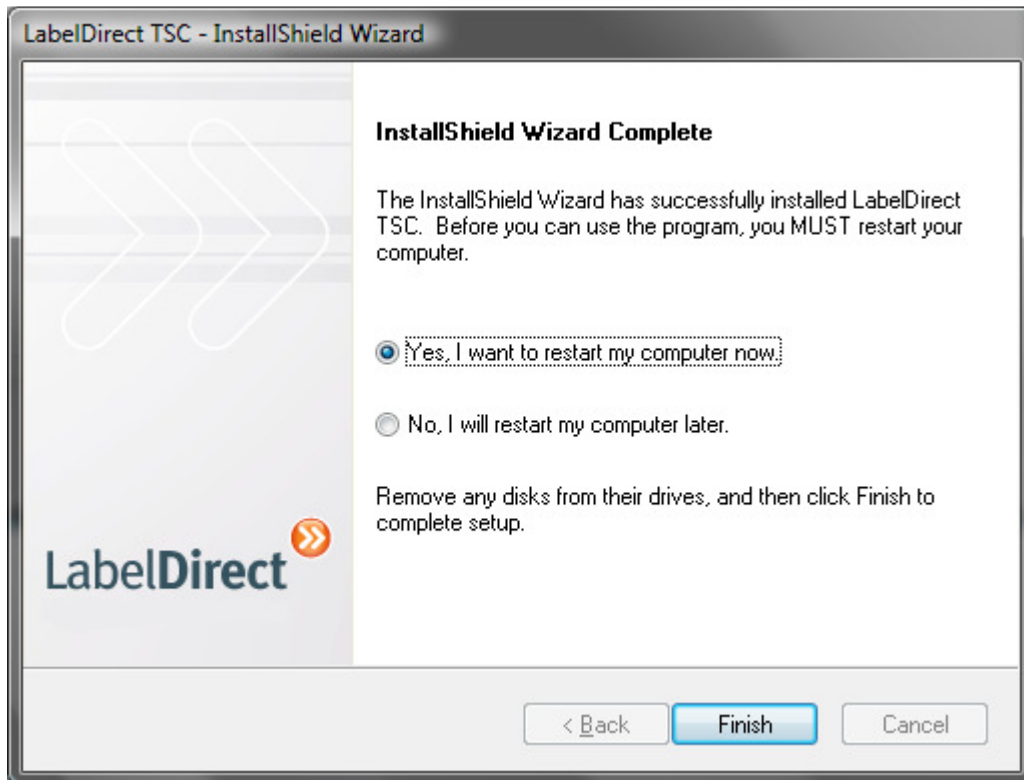


Select your printer from the list – make sure you choose the correct printer – it can be found on the underside of the printer or on the box the printer came in.

Click Next

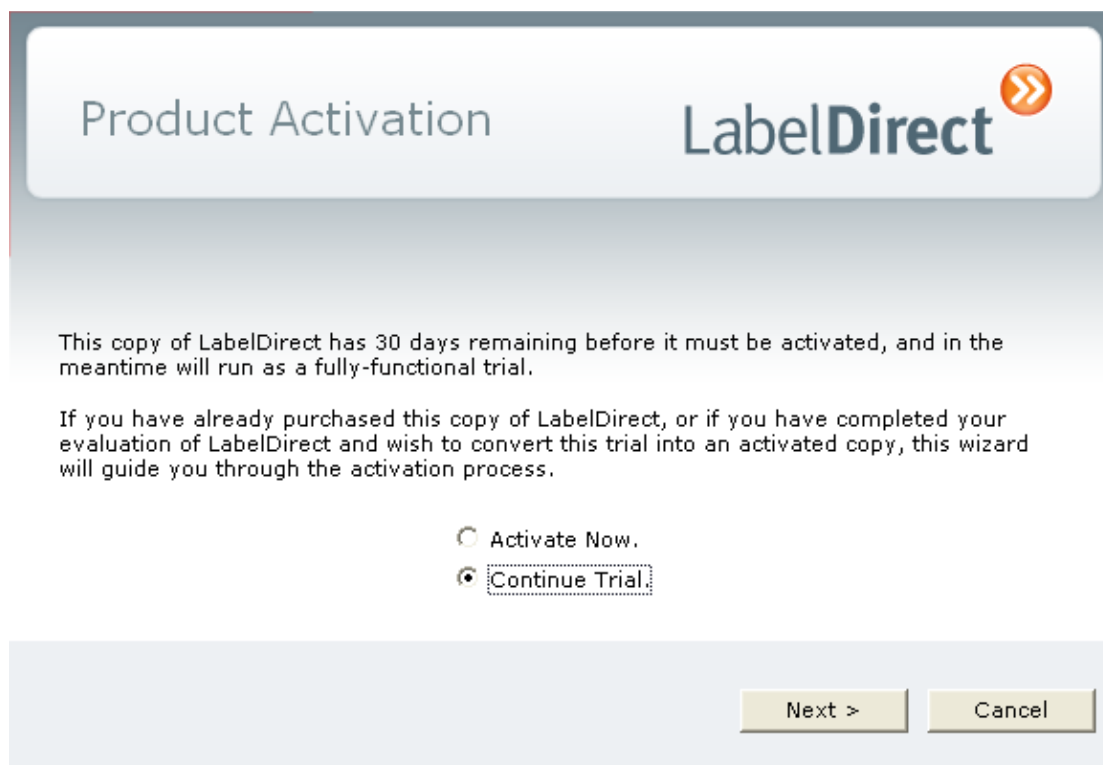


The program now advises where to install the software. Accept or change this and click Next and Install on the following screen.



Restart your computer if you want but the system should work without a restart.

Start LabelDirect:

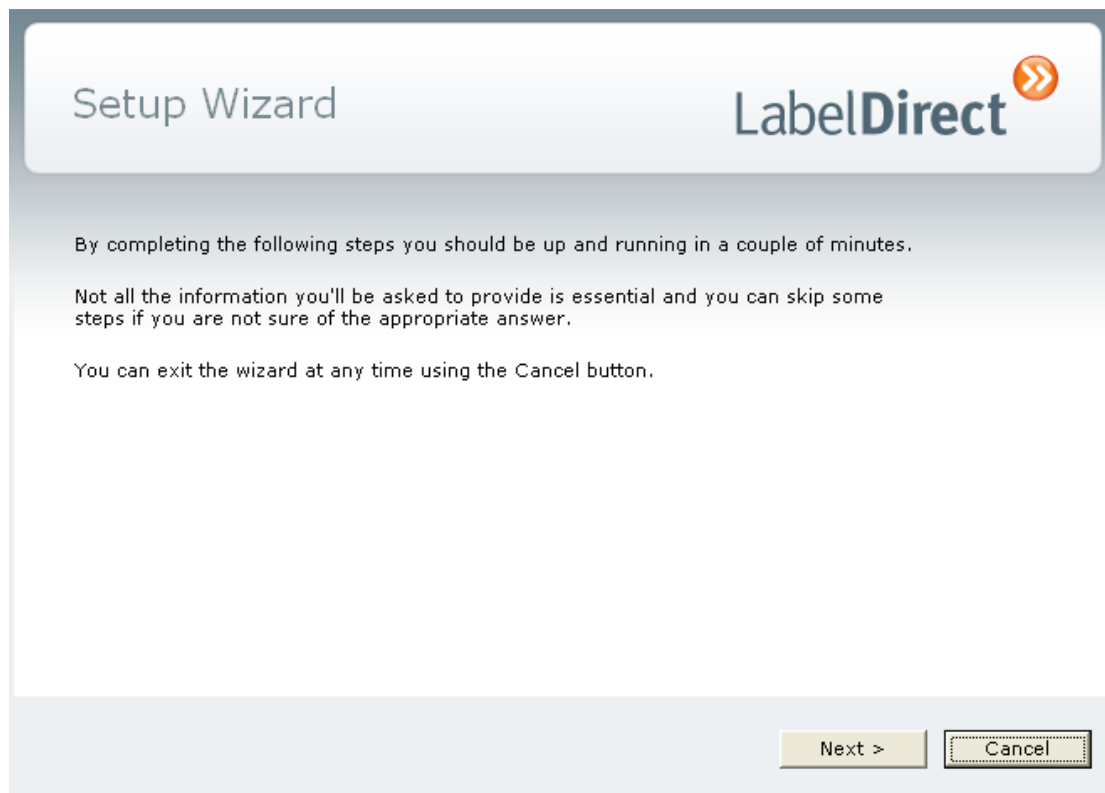


Select “Continue Trial” and click Next



A splash screen will appear (optionally: deselect the Show this window at startup)

Click on Label Setup Wizard



Click Next

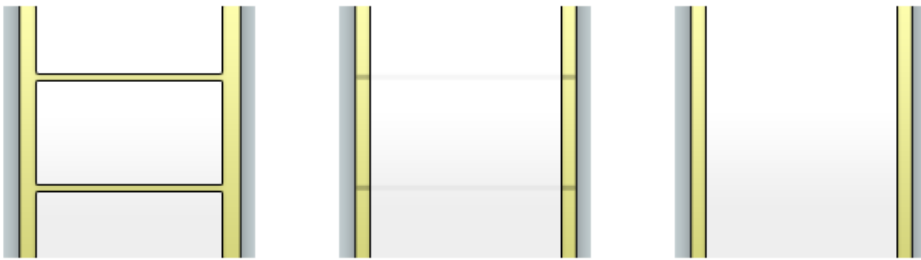
The following assumes you have taken a standard 45mmx74mm label

### Select Label Type

LabelDirect

Are your labels separated by a gap or a black line on the reverse of the label roll?

Gap       Black Mark       None (Continuous)



Next >      Cancel

Select Gap and Click Next

### Label Size & Shape

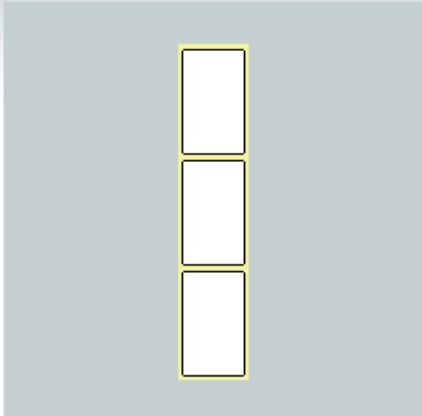
LabelDirect

Please specify the size and shape of your labels.

Label width (across roll):  mm  
Label length (along roll):  mm

Rectangular       Elliptical  
Corner radius:  mm


Number of labels across:



< Back      Next >      Cancel

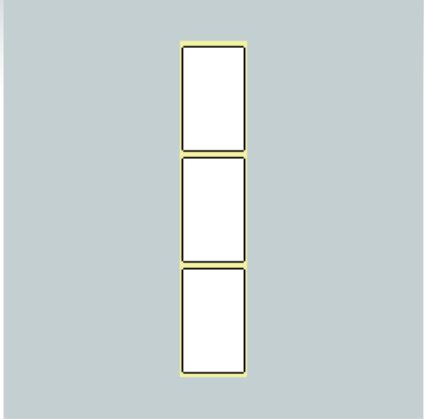
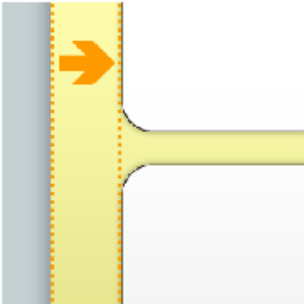
Fill in the measurements of your label as in the image above (45mmx74mm), 2mm corner radius and 1 label across. Click Next.

### Left Margin

LabelDirect 

What is the size of the margin between the left edge of your labels and the edge of the label backing?


Left Margin:  mm



< Back    Next >    Cancel

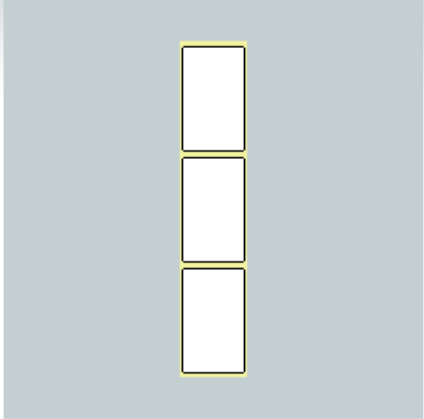
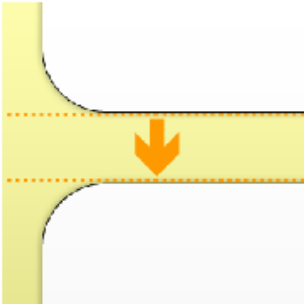
Set a 1mm gap and click Next

### Vertical Gap

LabelDirect 


What is the size of the vertical gap (along the roll) between the labels?

Vertical Gap:  mm

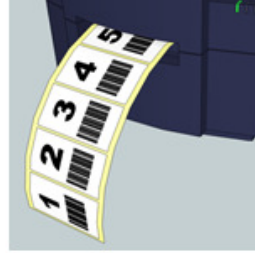





< Back    Next >    Cancel

Set a 3mm gap

Orientation LabelDirect 


How would you like the labels to issue from the printer?



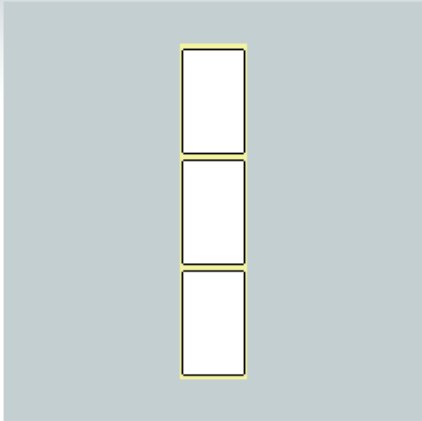
0° 90° 180° 270°

< Back Next > Cancel

Select 0° and click Next

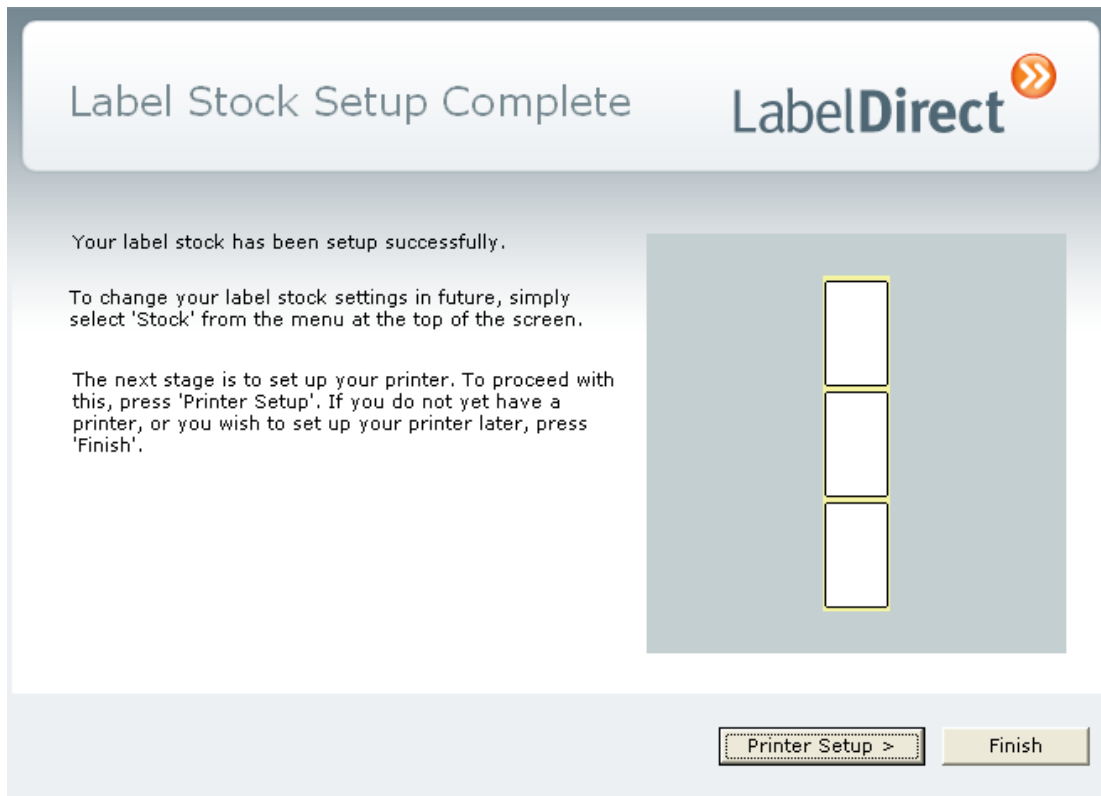
Label Stock Name LabelDirect 

Please give your new label stock a descriptive name.

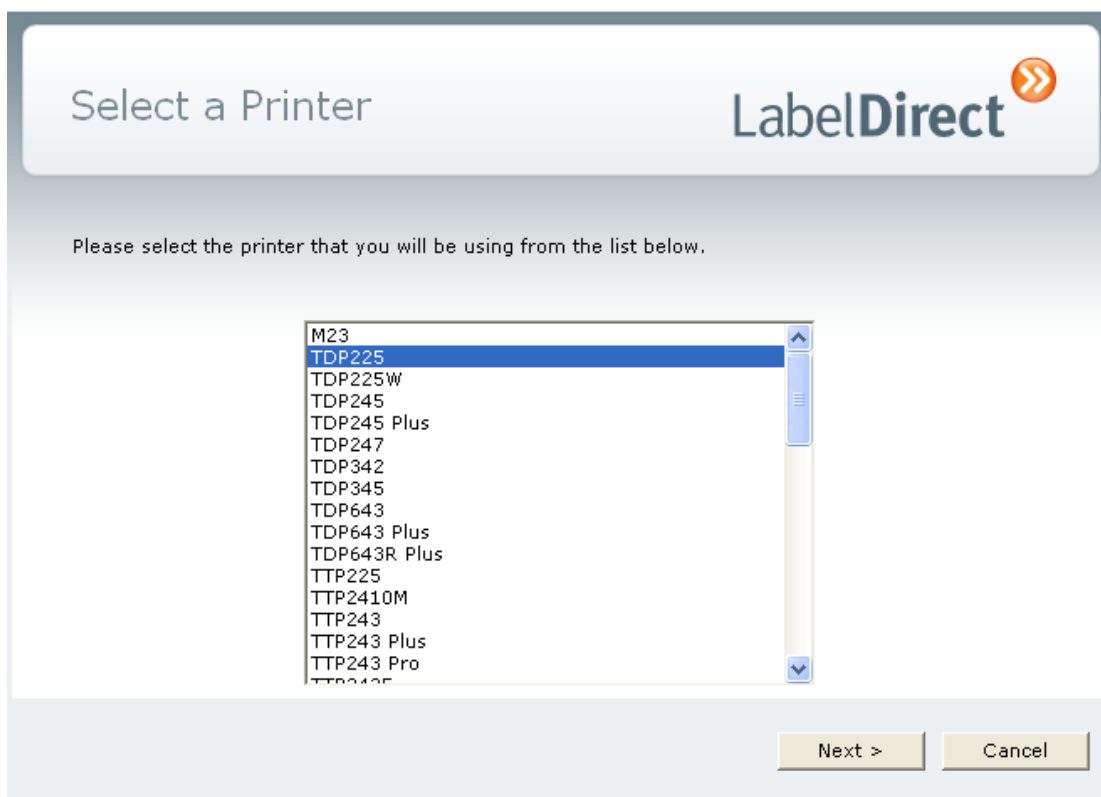


< Back Next > Cancel

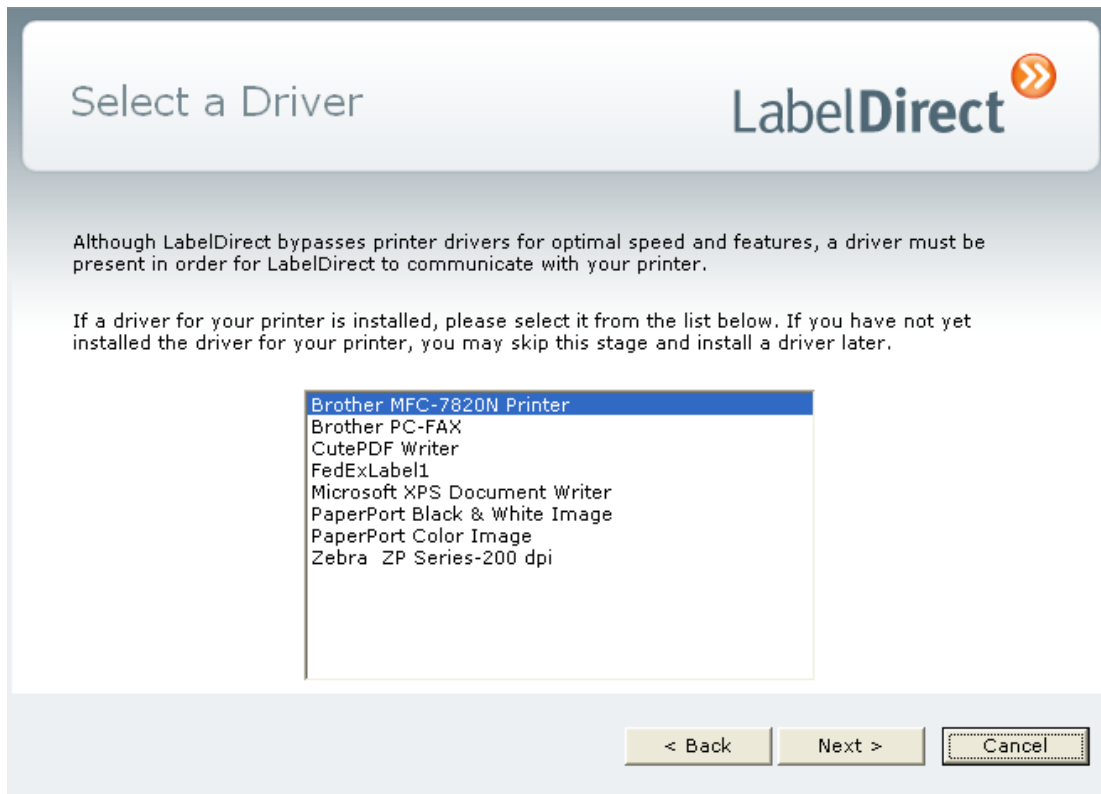
Name your printer stock and click Next



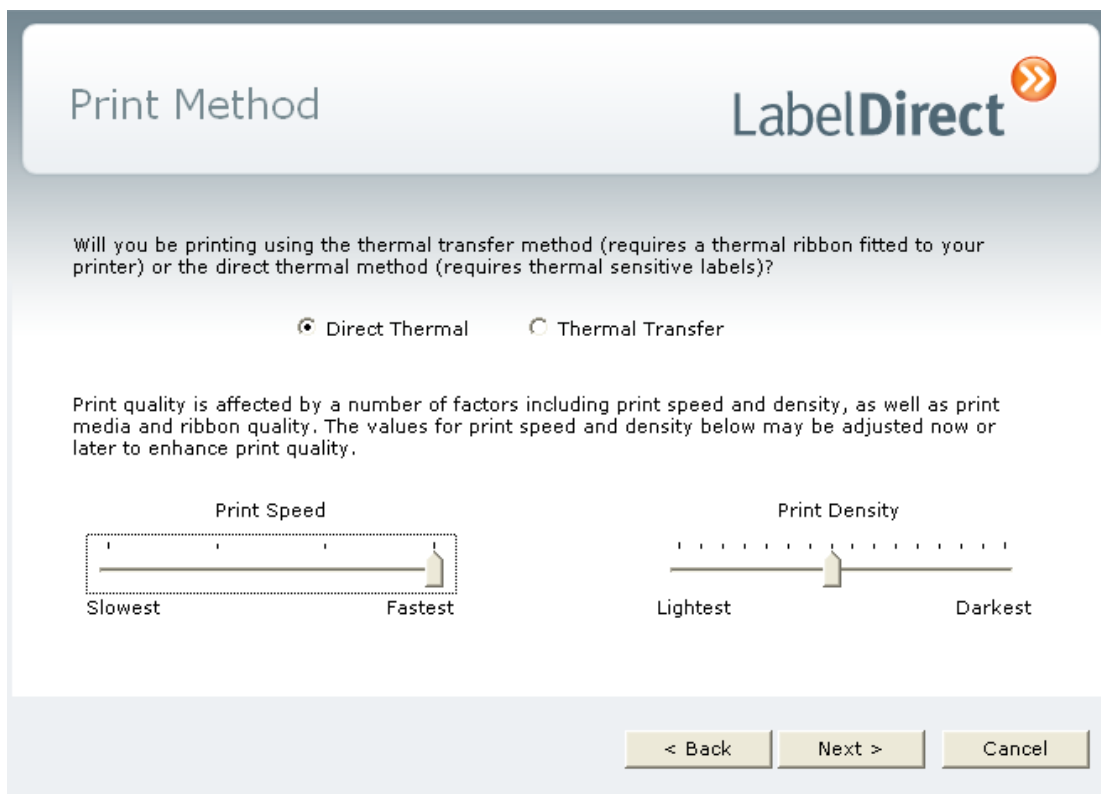
Click Printer Setup




Select your printer and click Next



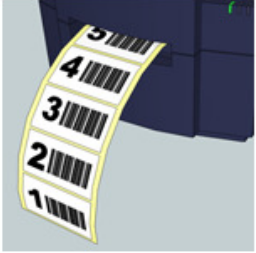
Select the appropriate Printer from your print list (the TDP225 is not shown in this example as it hasn't been installed but your list should show you your computer if you have already installed it as set out above.)



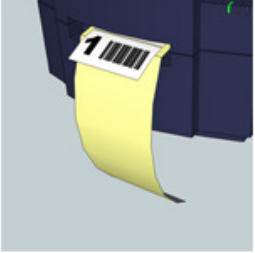
Set Direct Thermal option and fastest print speed

Label Removal Method LabelDirect 


What type of label removal method will you be using?



Tear-Off




Peel-Off  
(Requires Peel-Off Option)



Cut Every  Labels

< Back Next > Cancel

Select tear off option

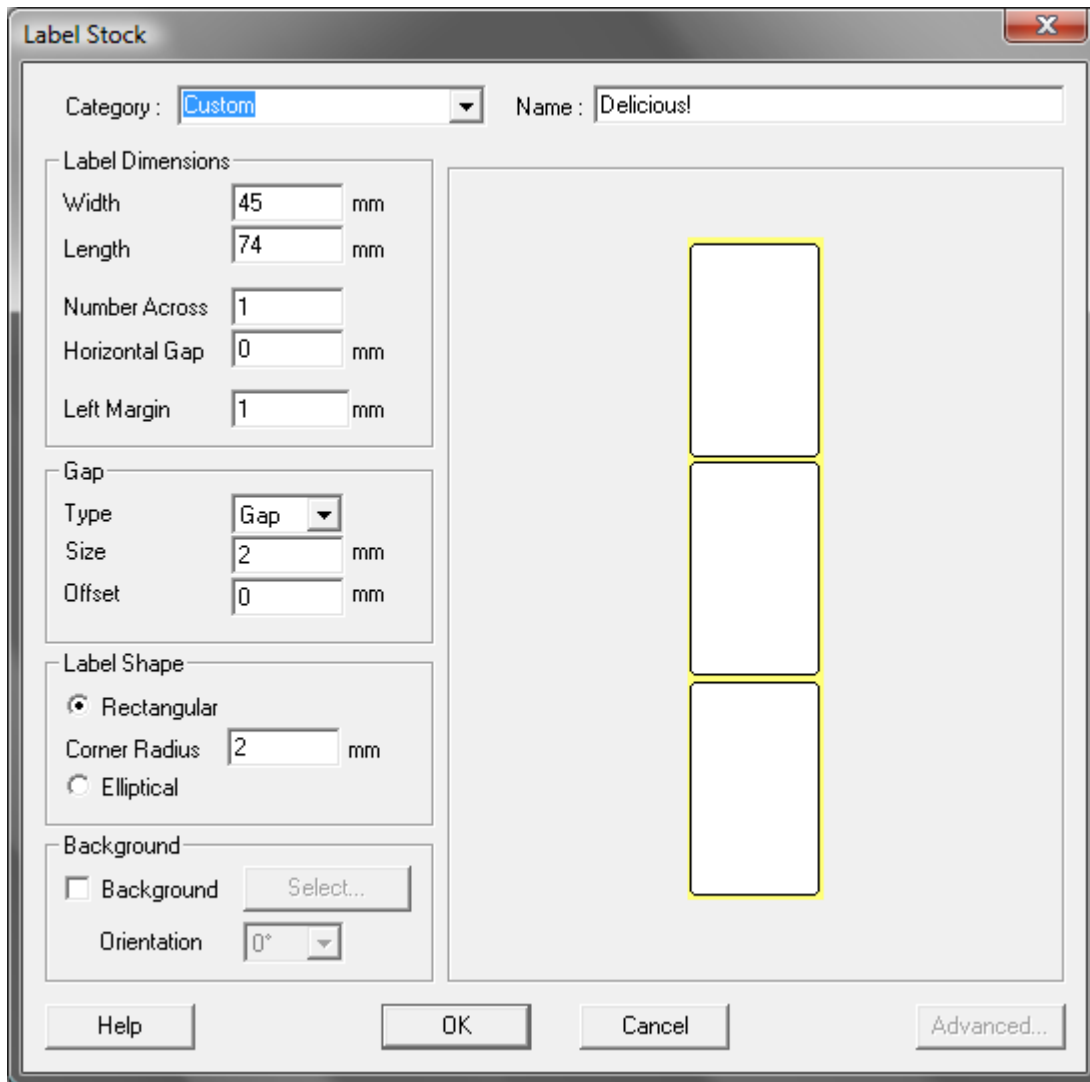
Printer Setup Complete LabelDirect 

To change your printer settings in future, simply select 'File->Print Setup' from the menu at the top of the screen.

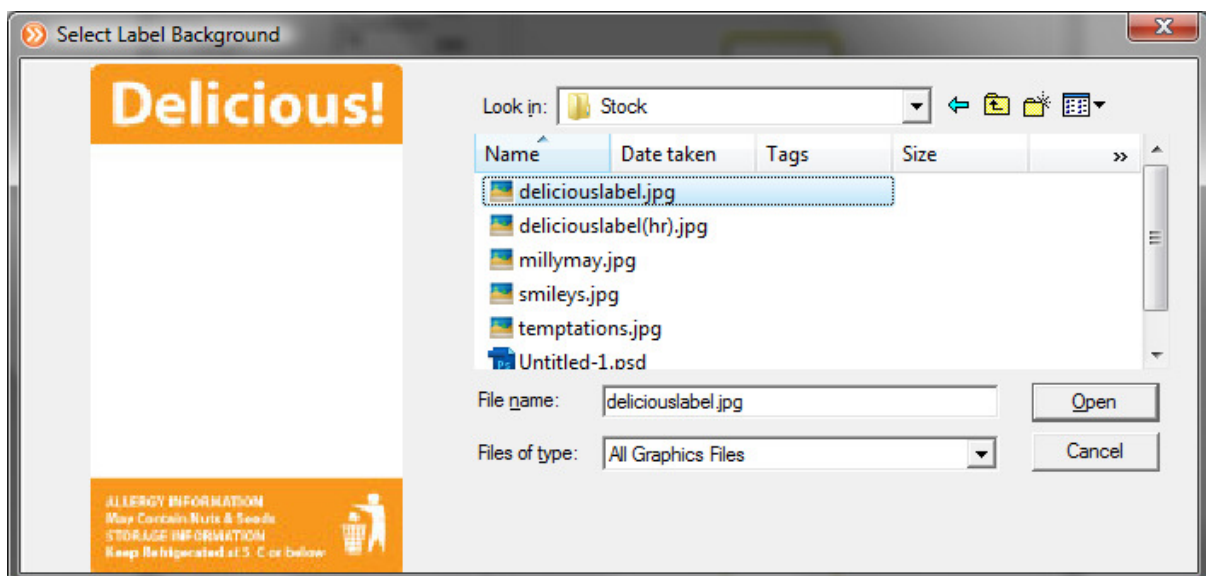
Finish

Click Finish

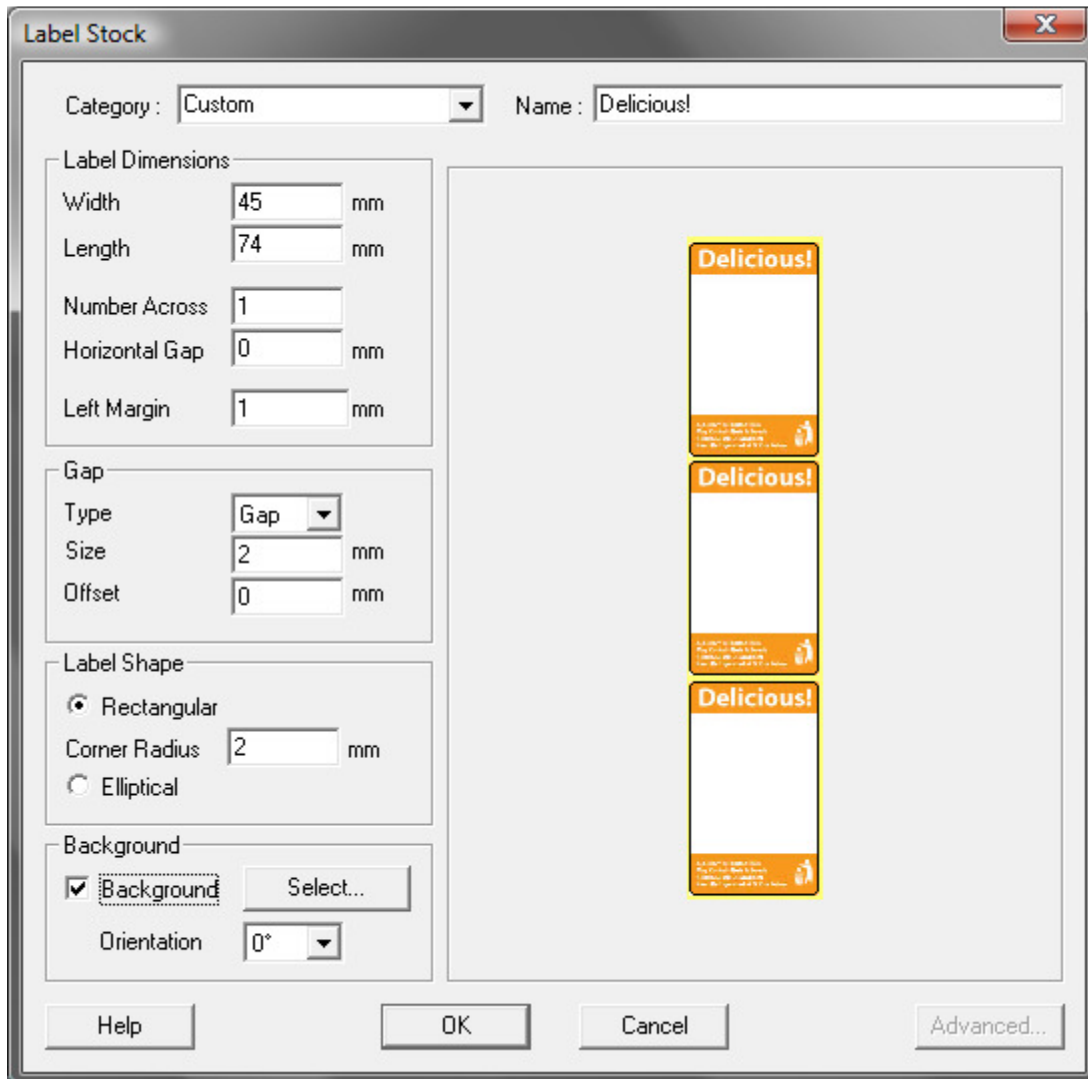
In the LabelDirect window, click “Stock” from the menu bar and select “Edit...”



Click the Background option

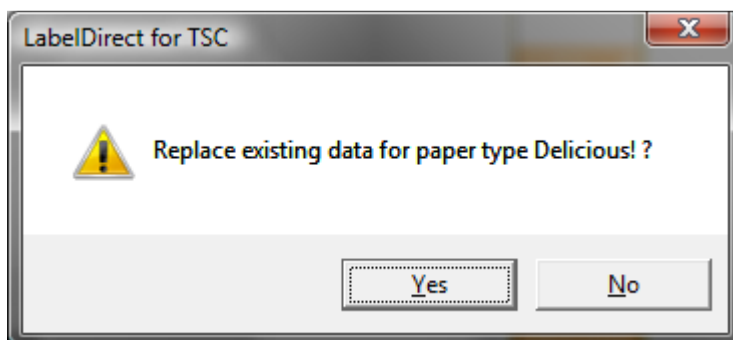


Browse to an image of your label and click open. The image will appear on your label proofs.



The labels will appear on the Label Stock window.

Click OK



Click Yes

The label will appear on the screen as it is from your printer.