

## Changing the Date Setting

Switch the printer and keyboard off at the power socket

Setup and start laptop computer (connect to power supply)

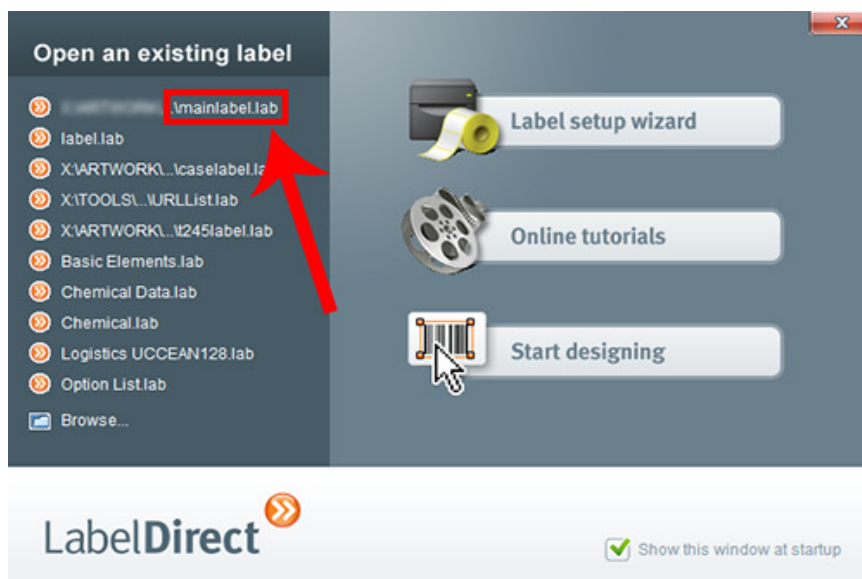
Once started, plug the beige USB cable into back of printer (should be in same bag as laptop computer)

Plug USB cable into Laptop

Switch Printer on at the power socket

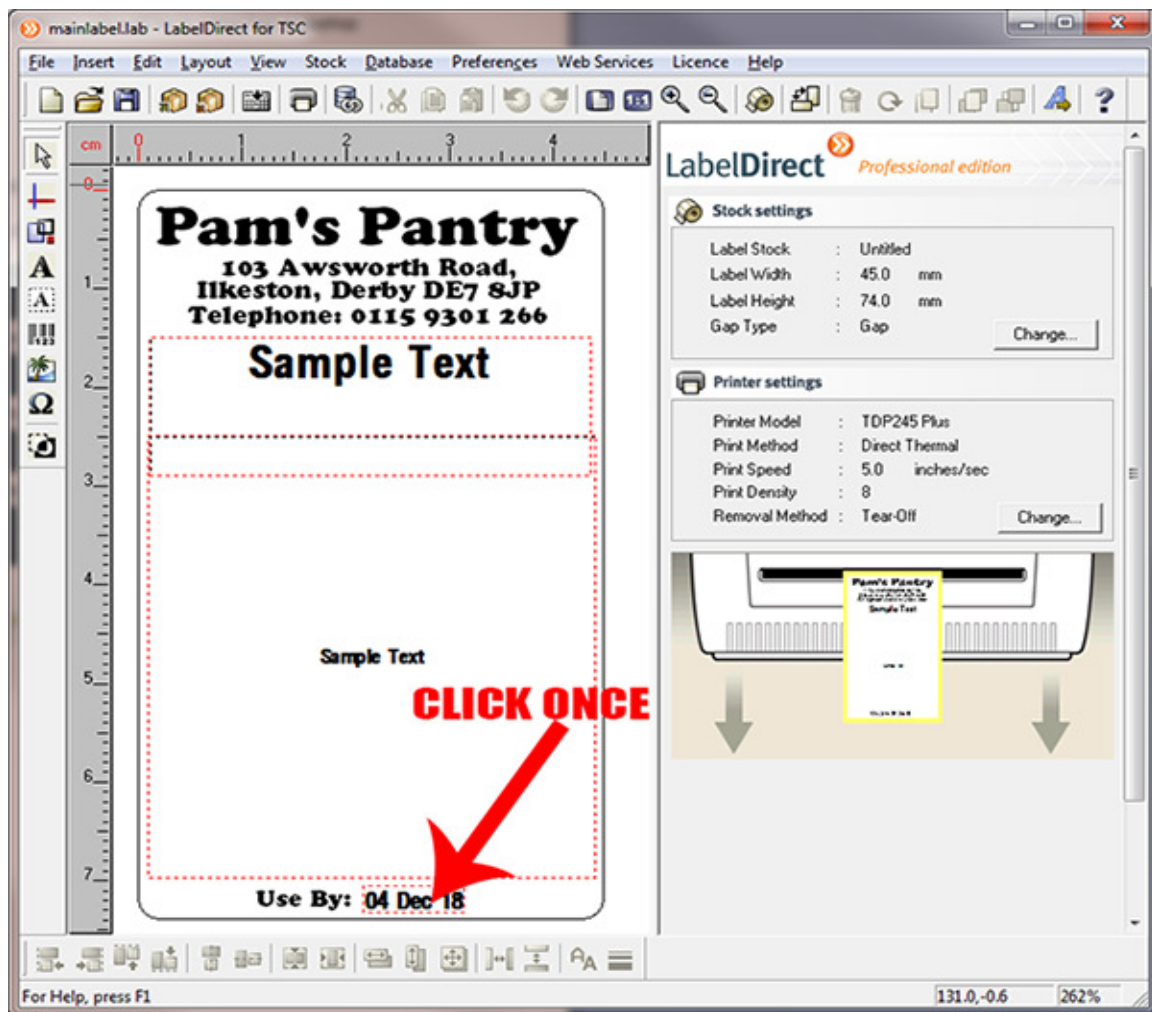
Double Click Label Direct Icon (not Direct Print Icon) on the desktop screen on the laptop

A “splashscreen” appears – this should offer a list of recent labels



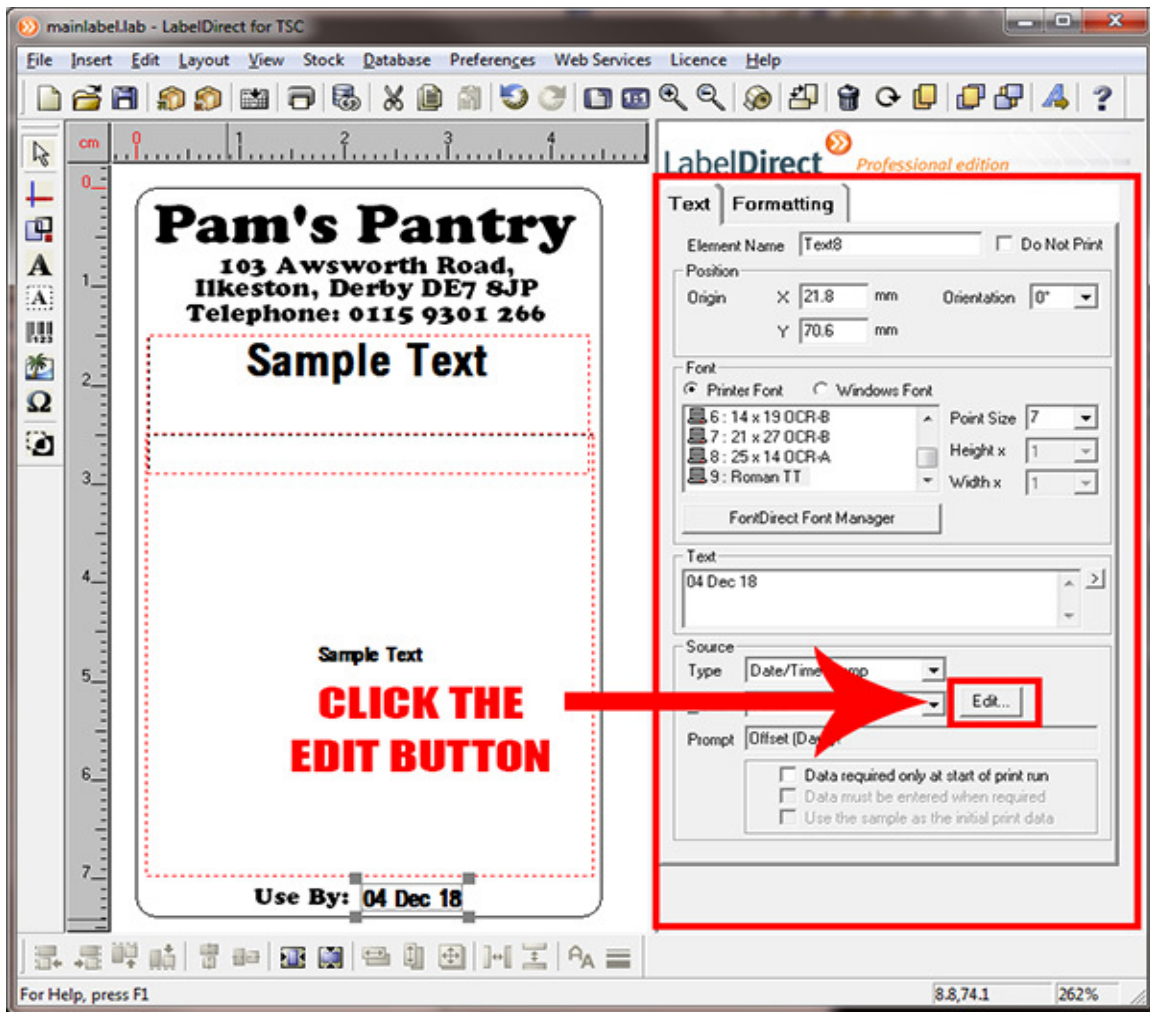
Select “mainlabel.lab”

Your screen should look like this:

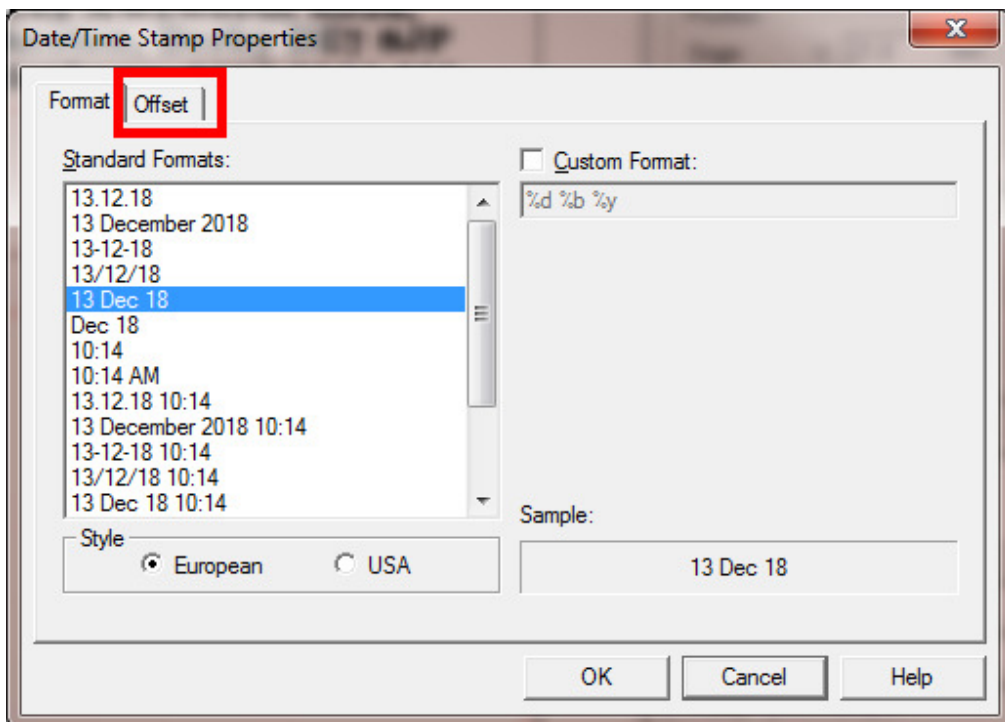


At the bottom of the label is an “ELEMENT” with the date on it. Indicated above. Click this once.

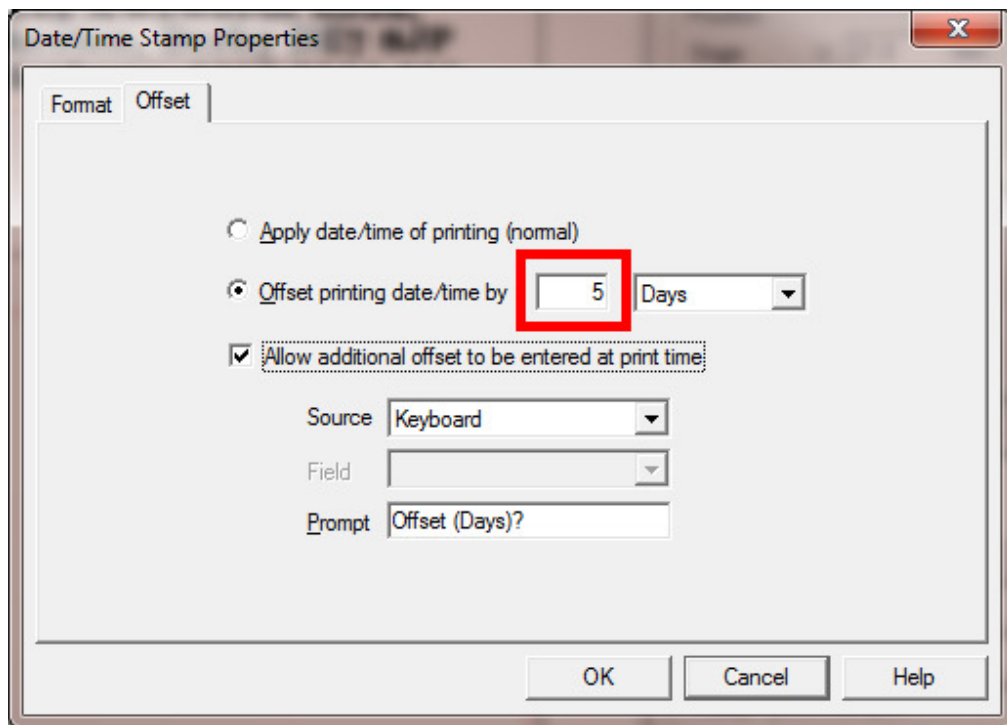
The right hand pane will change – click the edit button near the centre:



A Dialogue box appears: Click the Offset tab:



Change the value here to “3”

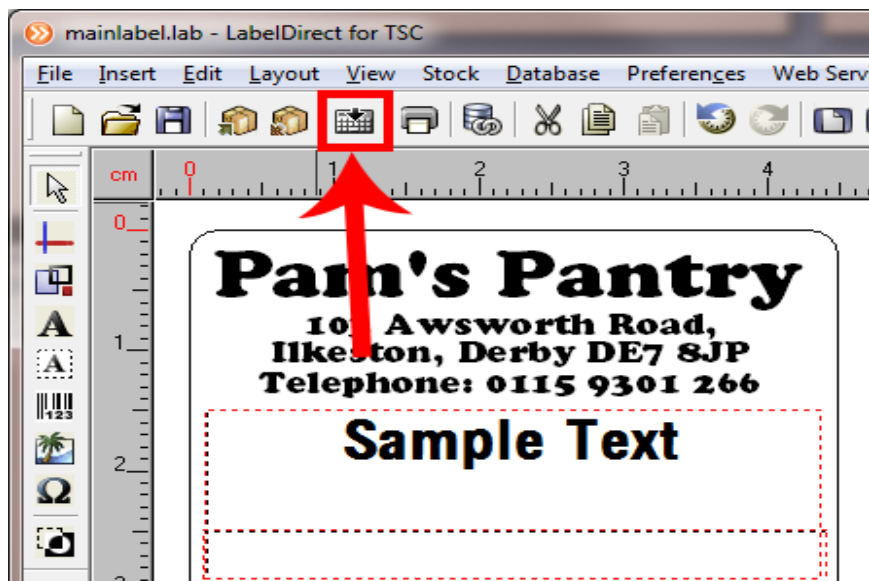


Click “OK”

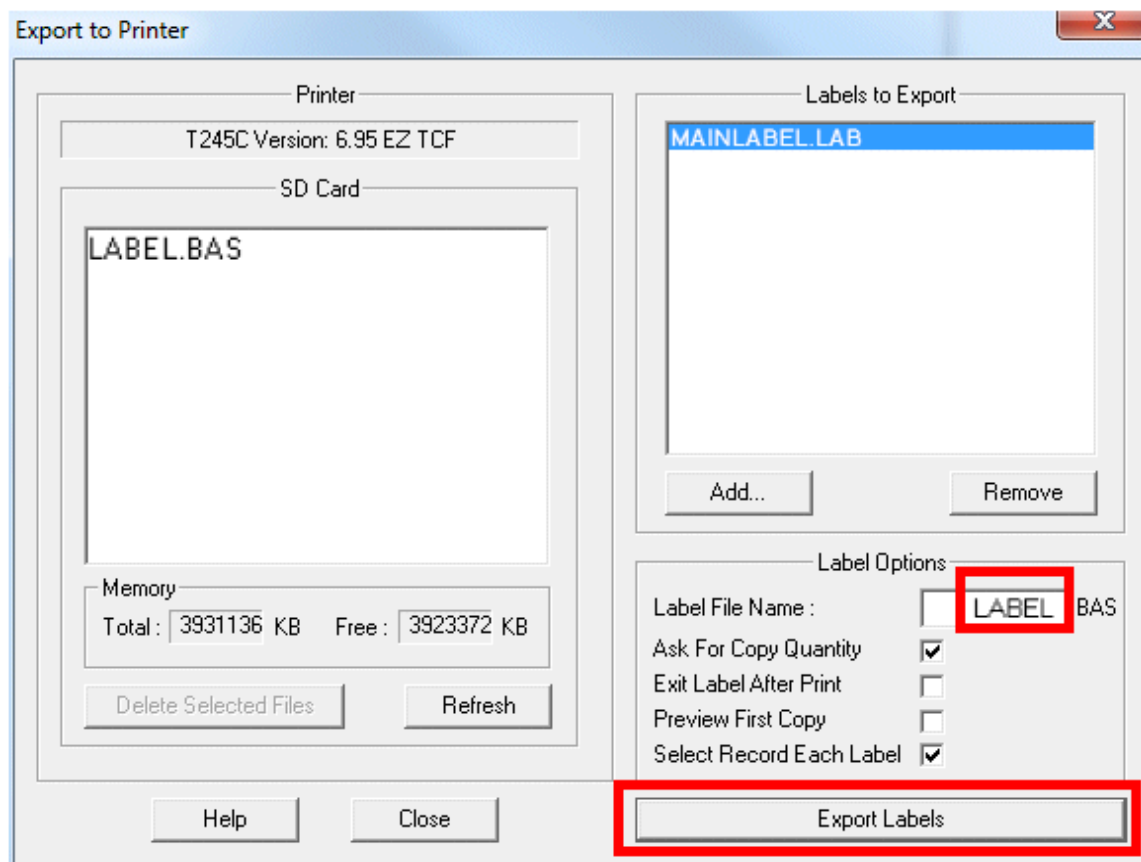
This will return you to the main interface. Click the save button to save your label.

You have now changed the label so that it will work correctly. We now need to upload it to the printer.

Click this button:



Wait for the dialogue box to appear:



In the small red box, type "LABEL"

Then Click the Export Labels button.

Follow the instructions (click OK etc.)

Test the printer using the keyboard to drive the labels.